



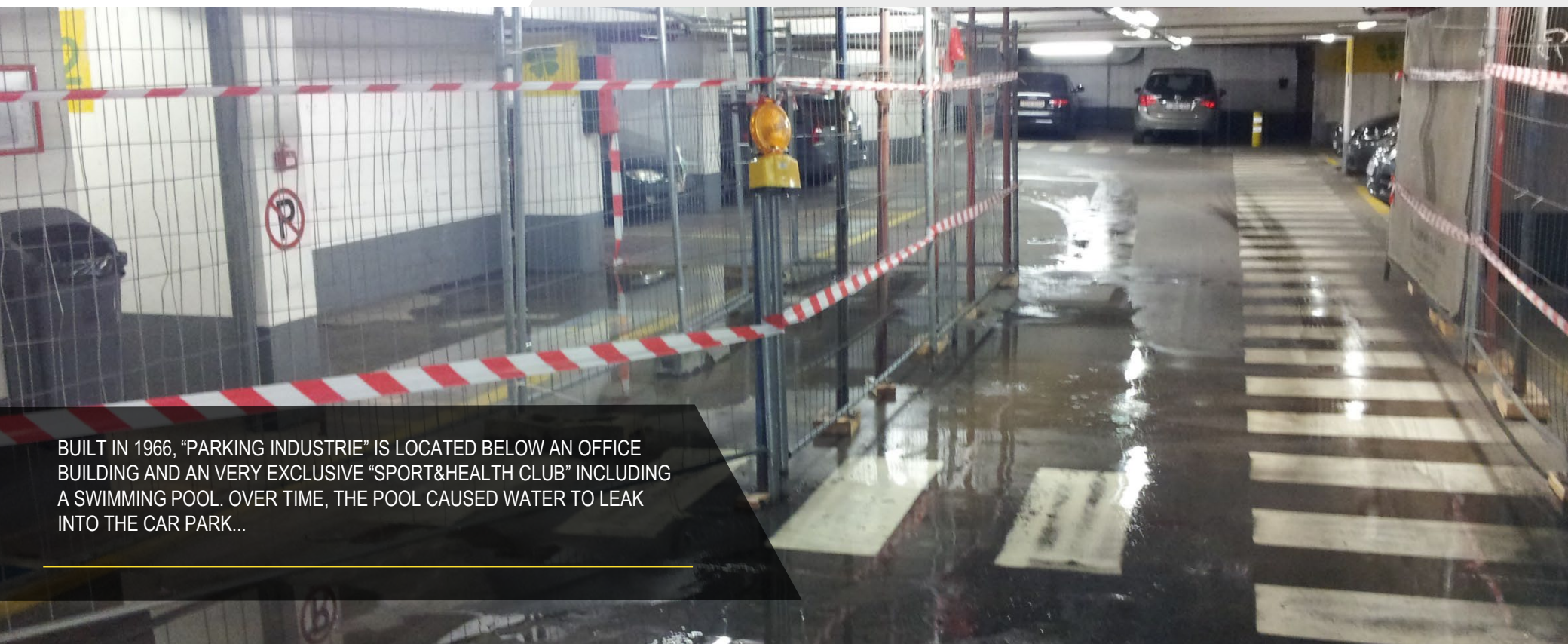
# EPA AWARDS 2019

▶ CATEGORY 2: "INTERPARKING - INDUSTRIE"

EPA Awards 2019 | Category 2: "Interparking – Industrie, BE Brussels - Belgium"

 **Interparking**

# INTRODUCTION



BUILT IN 1966, "PARKING INDUSTRIE" IS LOCATED BELOW AN OFFICE BUILDING AND AN VERY EXCLUSIVE "SPORT&HEALTH CLUB" INCLUDING A SWIMMING POOL. OVER TIME, THE POOL CAUSED WATER TO LEAK INTO THE CAR PARK...

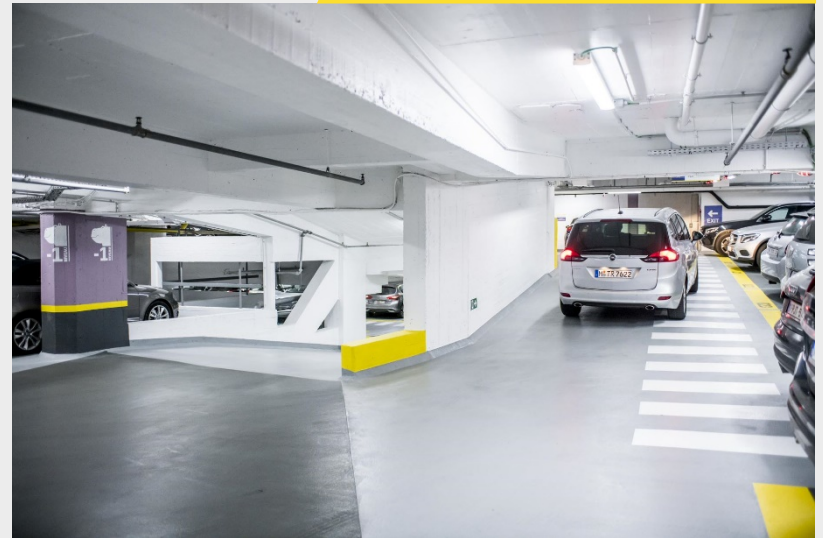


# COMPARISON

BEFORE

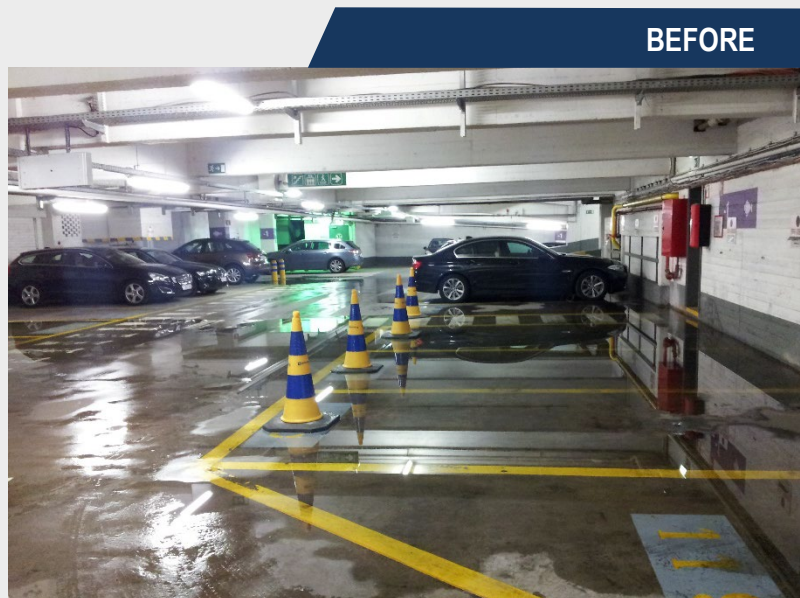


AFTER



TREATED WITH CHLORINE, THE WATER STARTED TO ATTACK THE CONCRETE AND THE IRON REINFORCEMENTS IN IT.

## COMPARISON



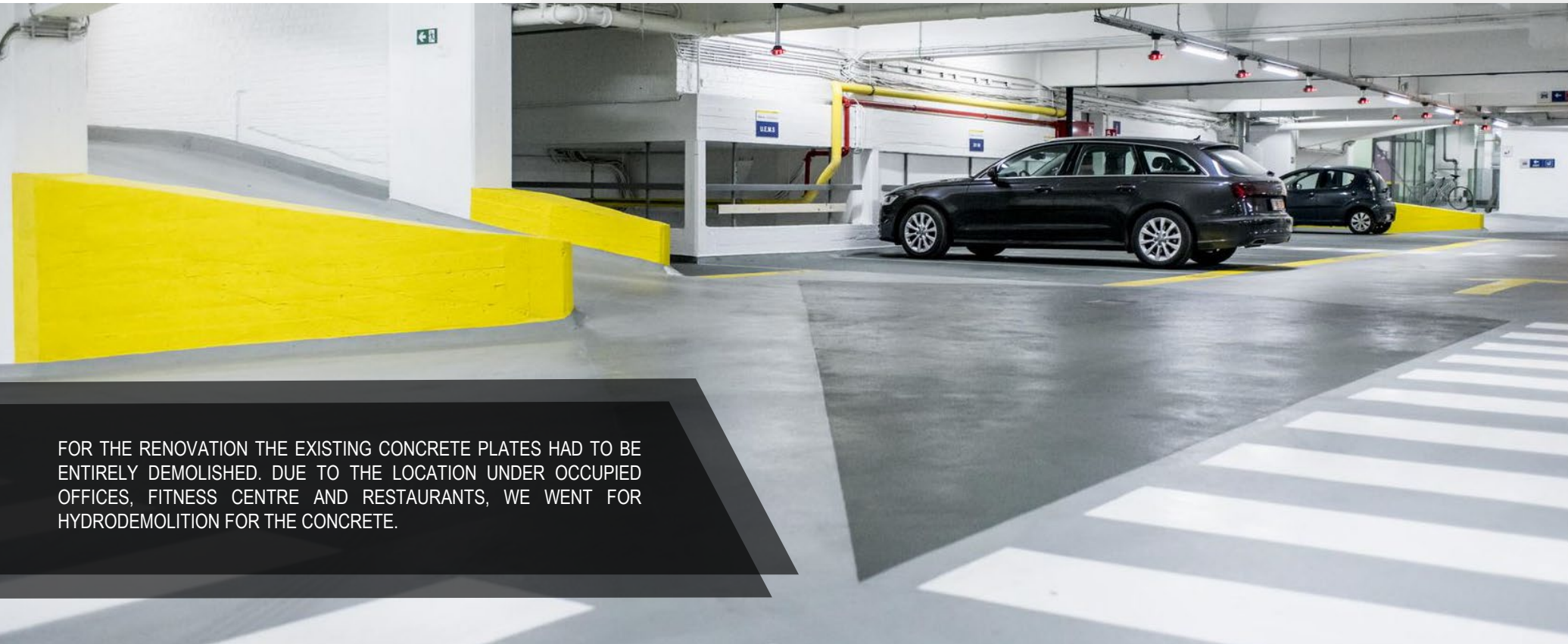
WE THEREFORE HAD TO CONDUCT A COMPLETE MAKE-OVER : WITH NEW STRUCTURE, EXTENSIVE FLOORCOATING AND WALLPAINTING. RESULTING IN A CLEAN AND PLEASANT ENVIRONMENT.

COMFORT WAS OUR KEYWORD:  
MAKING 2 ELEVATORS FROM 3, WE  
SACRIFICED ONE TO MAKE THE  
REMAINING ONES LARGER AND  
MORE COMFORTABLE.

WE REPLACED STEEL DOORS BY  
GLASS LOOKING THROUGH DOORS  
INCREASING THE SAFETY FEELING.







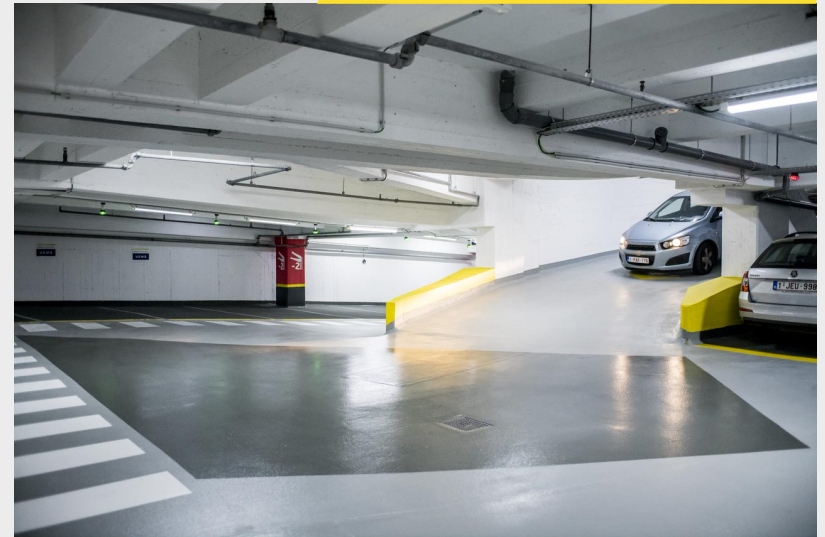
FOR THE RENOVATION THE EXISTING CONCRETE PLATES HAD TO BE ENTIRELY DEMOLISHED. DUE TO THE LOCATION UNDER OCCUPIED OFFICES, FITNESS CENTRE AND RESTAURANTS, WE WENT FOR HYDRODEMOLITION FOR THE CONCRETE.

# COMPARISON

BEFORE

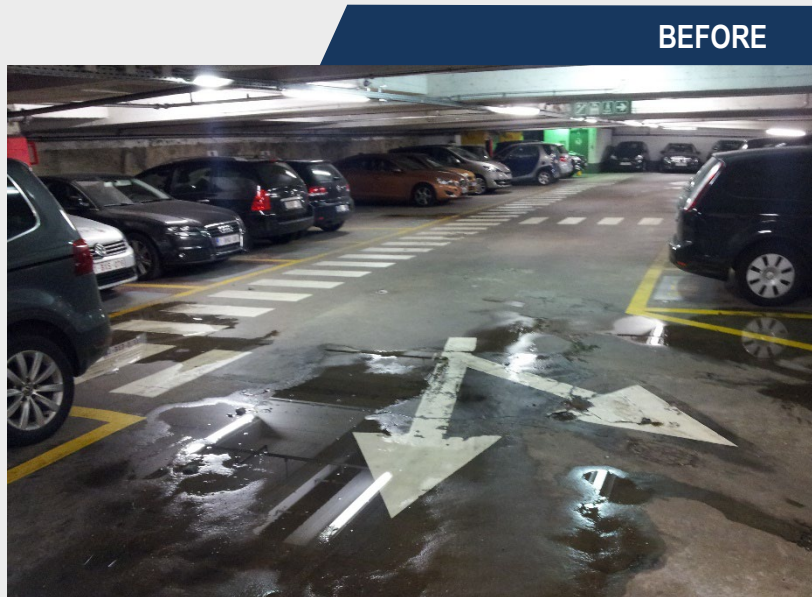


AFTER



THANKS TO LED LIGHTING AND DIMING SYSTEMS, THE AUTOMATIC LIGHTS  
TURN ON WHEN A MOVE IS DETECTED...

## COMPARISON



... ALLOWINGS A LIGHTER ENVIRONMENT AT LOWER COSTS.

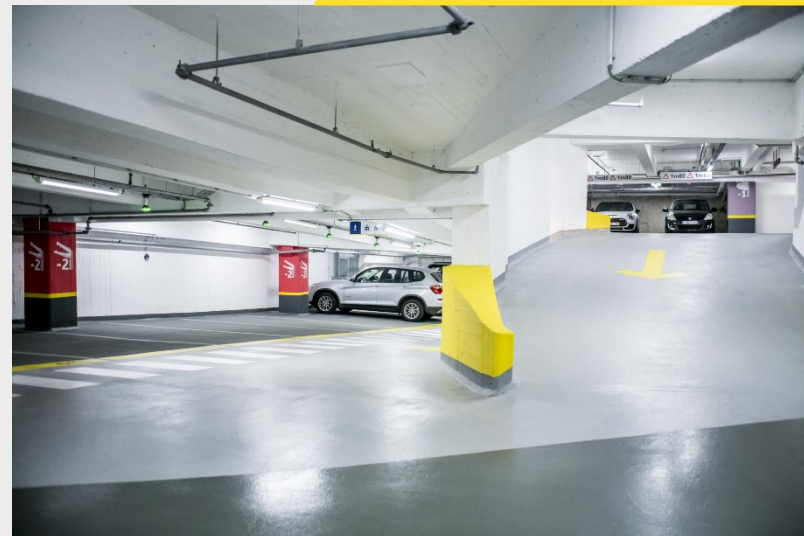


## COMPARISON

BEFORE

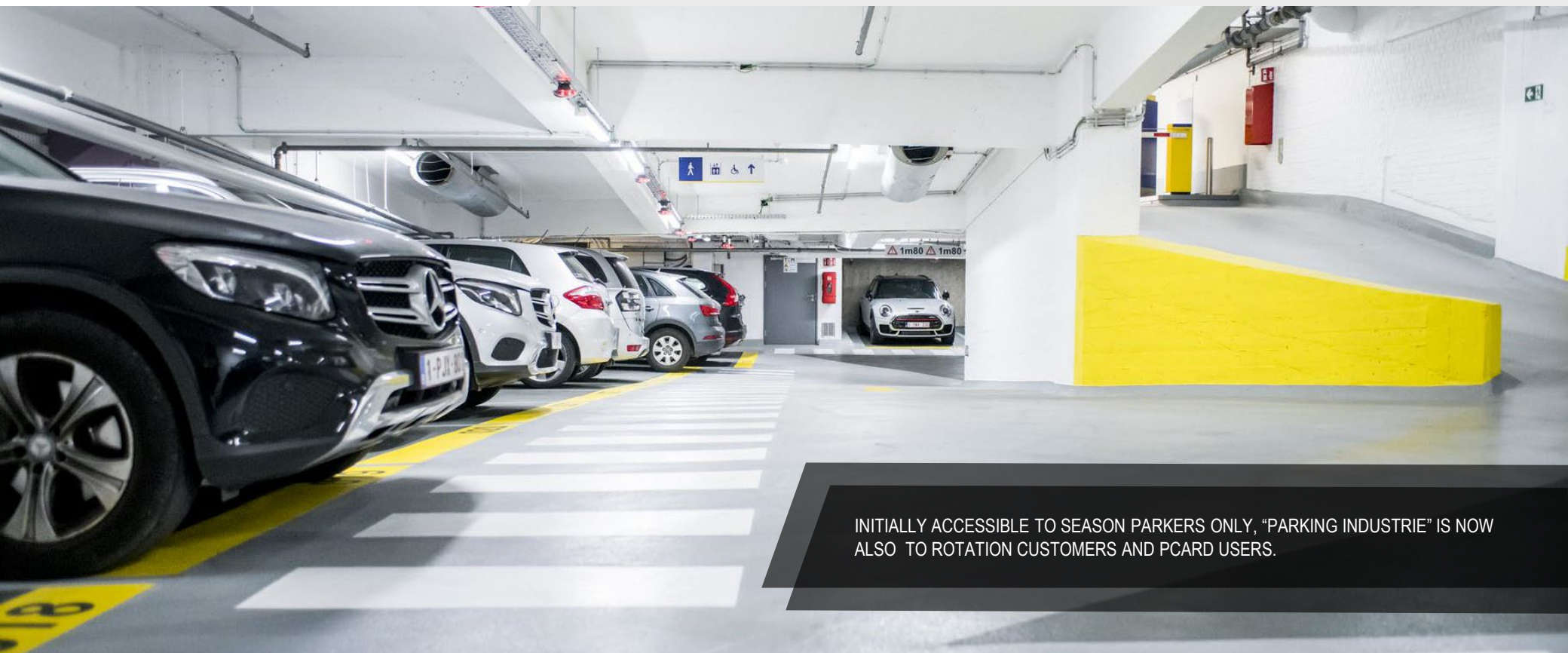


AFTER



THE FLOOR COATING ENSURES NOW THAT NO LIQUIDS (WATER, BUT ALSO FUEL OR OIL FROM CARS) WILL PASS, TO PREVENT SOIL POLLUTION.

## NEW CUSTOMERS



INITIALLY ACCESSIBLE TO SEASON PARKERS ONLY, "PARKING INDUSTRIE" IS NOW ALSO TO ROTATION CUSTOMERS AND PCARD USERS.