

EPA 2017 – Tapiola Park

Q-Park Finland Oy | EPA Awards | Category 1: New parking structures





- Tapiola, at the heart of the metropolitan area, has been the retail, business, and cultural centre of Espoo since 1950.
- The **garden city** of Tapiola has a natural landscape with human dimensions. Architects involved were include: Aulis Blomstedt, Aarne Ervi, Viljo Reveil and Alvar Aalto.
- Redevelopment of the Tapiola area started in 2009, where **accessibility** and the **environment** were key considerations.
- Tapiola Park car park forms the foundation for future development of the entire Tapiola area.
- When completed, an estimated 15 million people will visit annually.

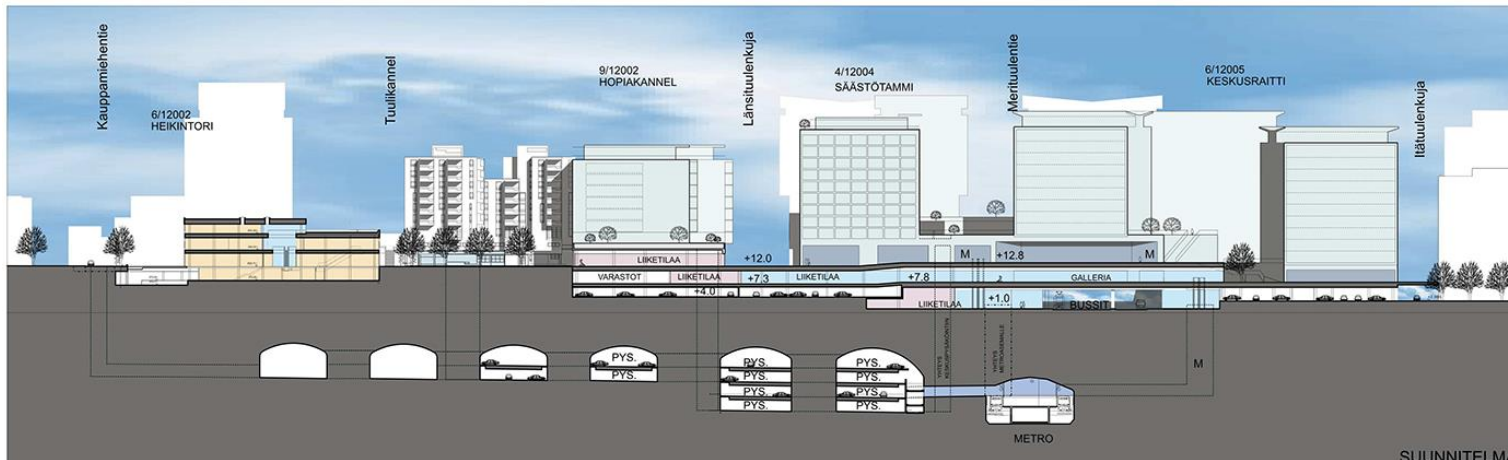
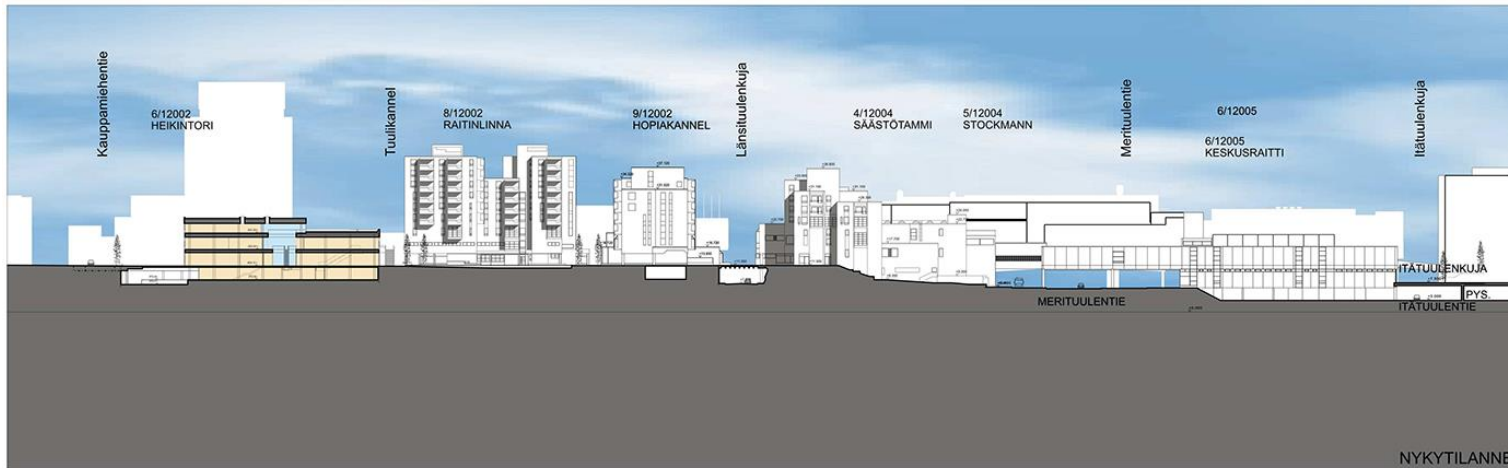
Regeneration of Tapiola city centre – 1



- When Tapiola's city centre modernisation is completed it will be a multi-level, versatile pedestrian centre at the heart of a garden city – unique in the world.
- The development will include housing, leisure amenities, shops and offices, as well as services - a complete urban solution where everything is close by.
- Redevelopment will be completed between 2020 and 2025 and includes a metro station, bus terminal, commercial space and residential buildings.
- Residential buildings will be located above the commercial buildings.

Regeneration of Tapiola city centre – 2

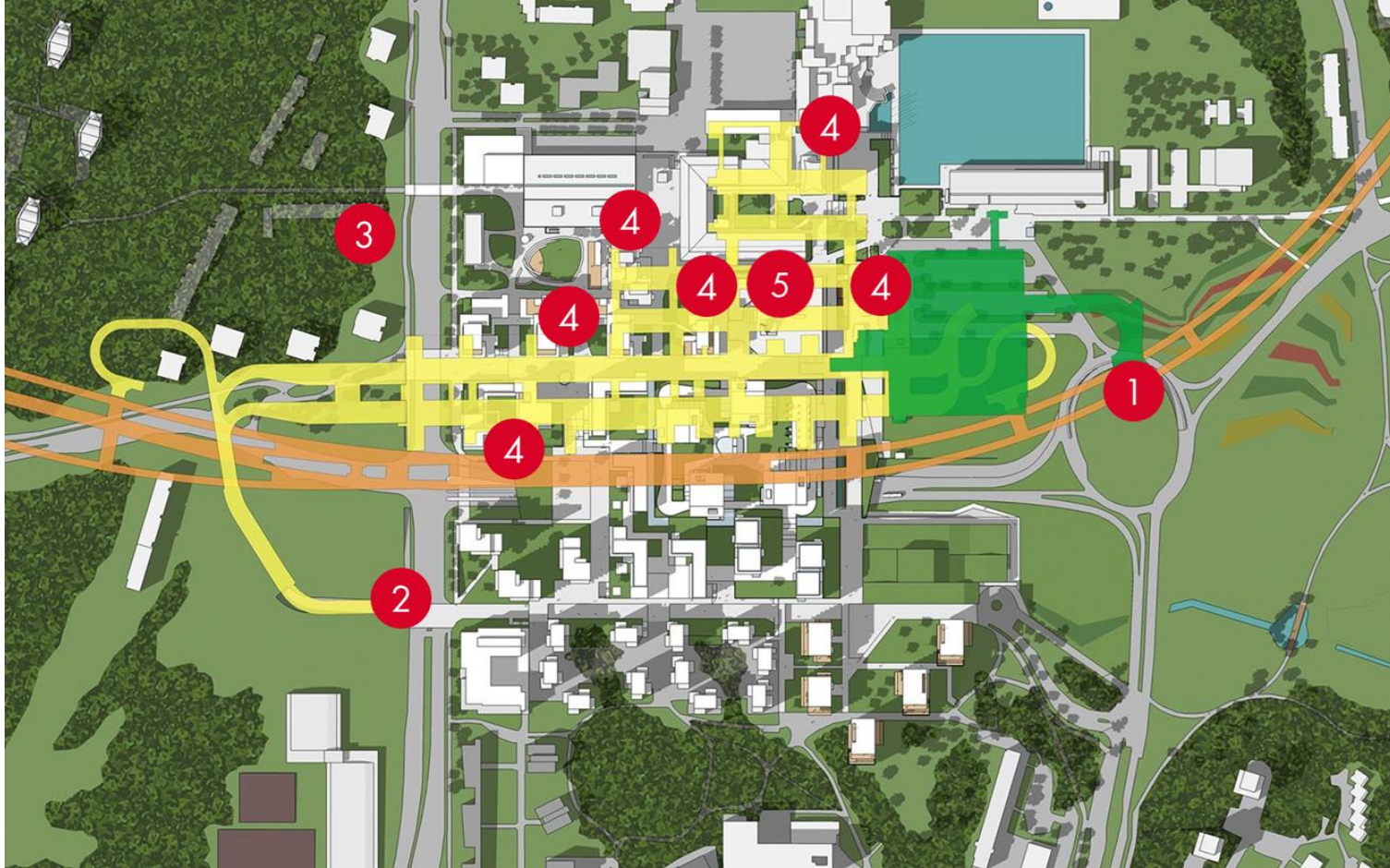
Regeneration of Tapiola



Future of Tapiola

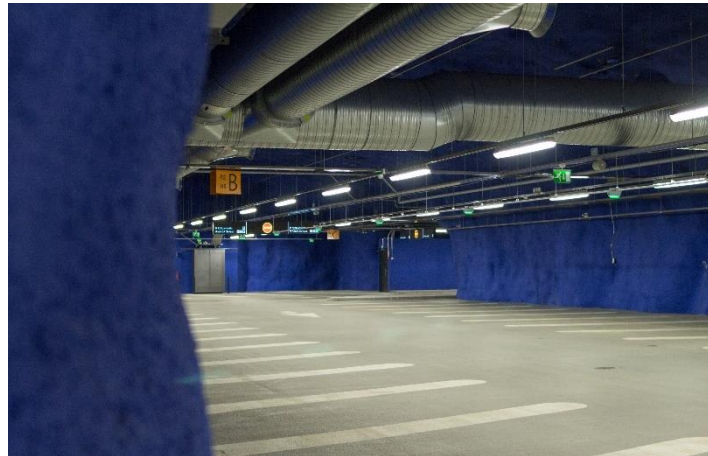
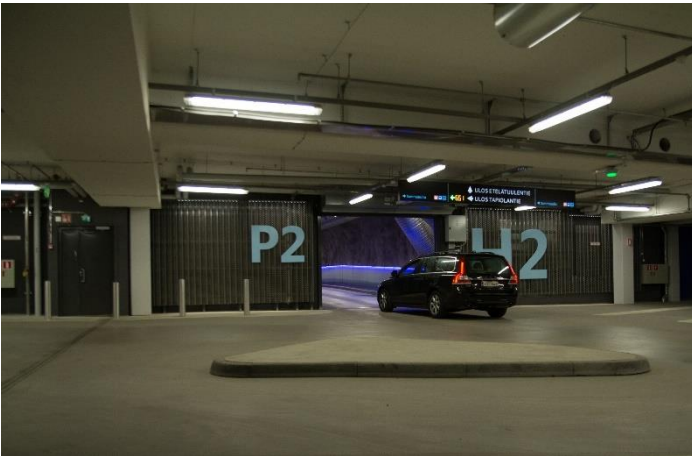
- Largest underground car park in Finland
 - Construction costs - EUR 115 million
 - 1,680 parking spaces on four levels
 - Two lowest levels (372 spaces) will be reserved for commuters
- Completed in March 2016
- Provide parking for:
 - Ainoa Shopping Centre (50,000m²)
 - Stockmann department store
 - New Tapiola transport node:
 - metro station with 20,000 commuters daily
 - bus terminal
 - Offices, hotel customers, visitors to Espoo Culture centre and library, and local residents
 - Tapiola city centre is above the car park

City environment – Tapiola city centre



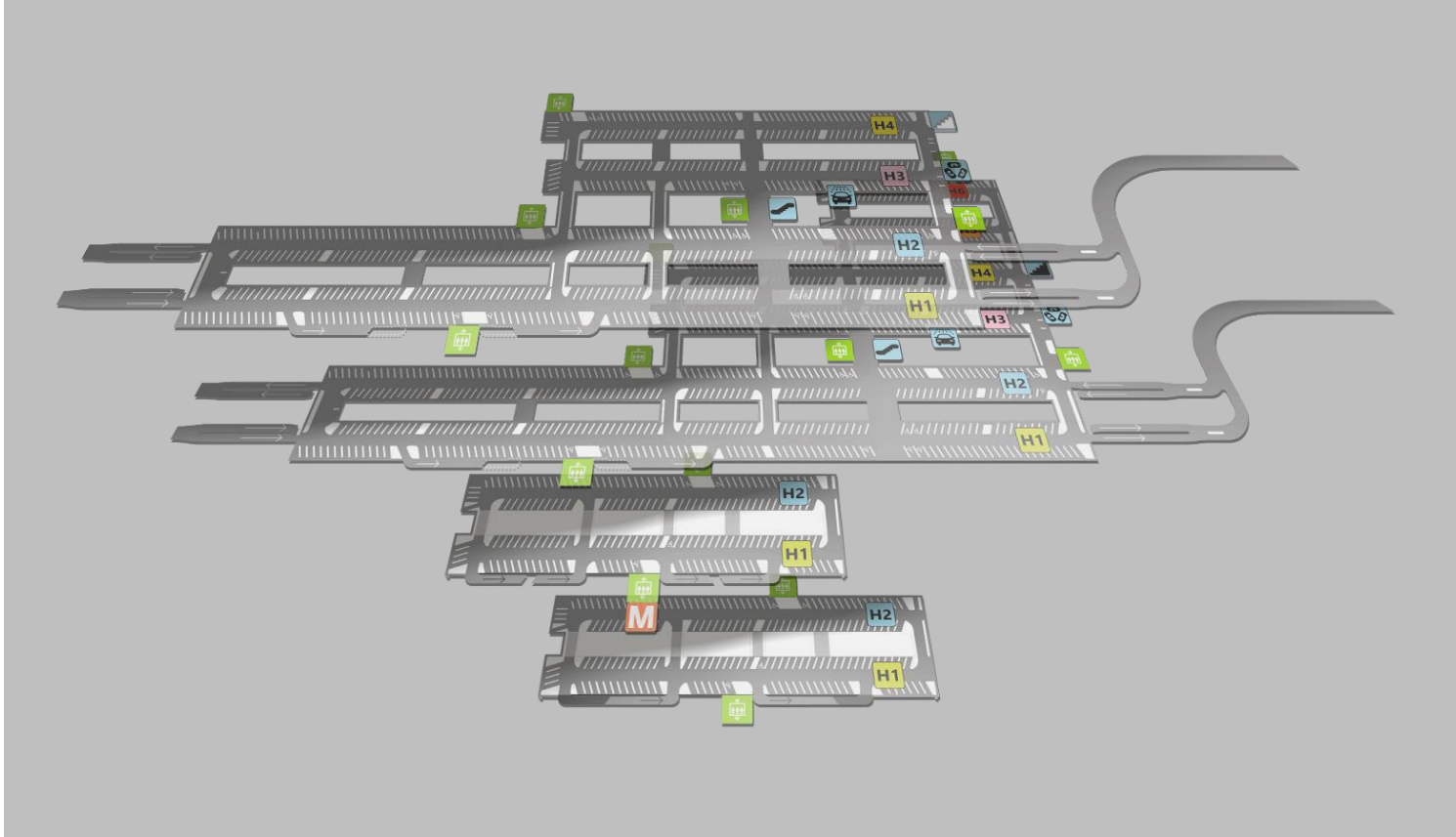
- Yellow area is the new car park
- Green area is the older part of the Tapiola Park car park
- 1. East entry/exit
- 2. West entry/exit
- 3. Future option for an entry/exit
- 4. Six elevator shafts
- 5. Lobby; elevators & escalators

Structure 1



- Total floor area 83,470 m², which is equal in size to Helsinki's Olympic Stadium
- Blasted in rock (> 460,000 m³)
- Lowest level at 38 m below the surface 1,680 column free parking spaces, adding > 30% parking capacity to Tapiola
- Well-lit throughout light, about 3,150 fluorescent tubes
- Chiaroscuro light effect; a fantastic contrast made by the deep ultramarine blue of the walls and the clear lighting
- Jet Thrust Fan ventilation system
- Better air quality and lower energy consumption compared to ducted system

Structure 2



- One way traffic in the entire car park
- 31 elevators
- 4 escalators to and from the main lobby
- Angled spaces
- Aisles are 17 meters wide
- 41 spaces for disabled
- 10 spaces for e-car charging
- 70 spaces for low-emission cars
- 18 payment machines and the option to pay at the exit (4 lanes)
- Pleasant inside temperature even during cold winter days
- Air raid shelter for 4,040 people

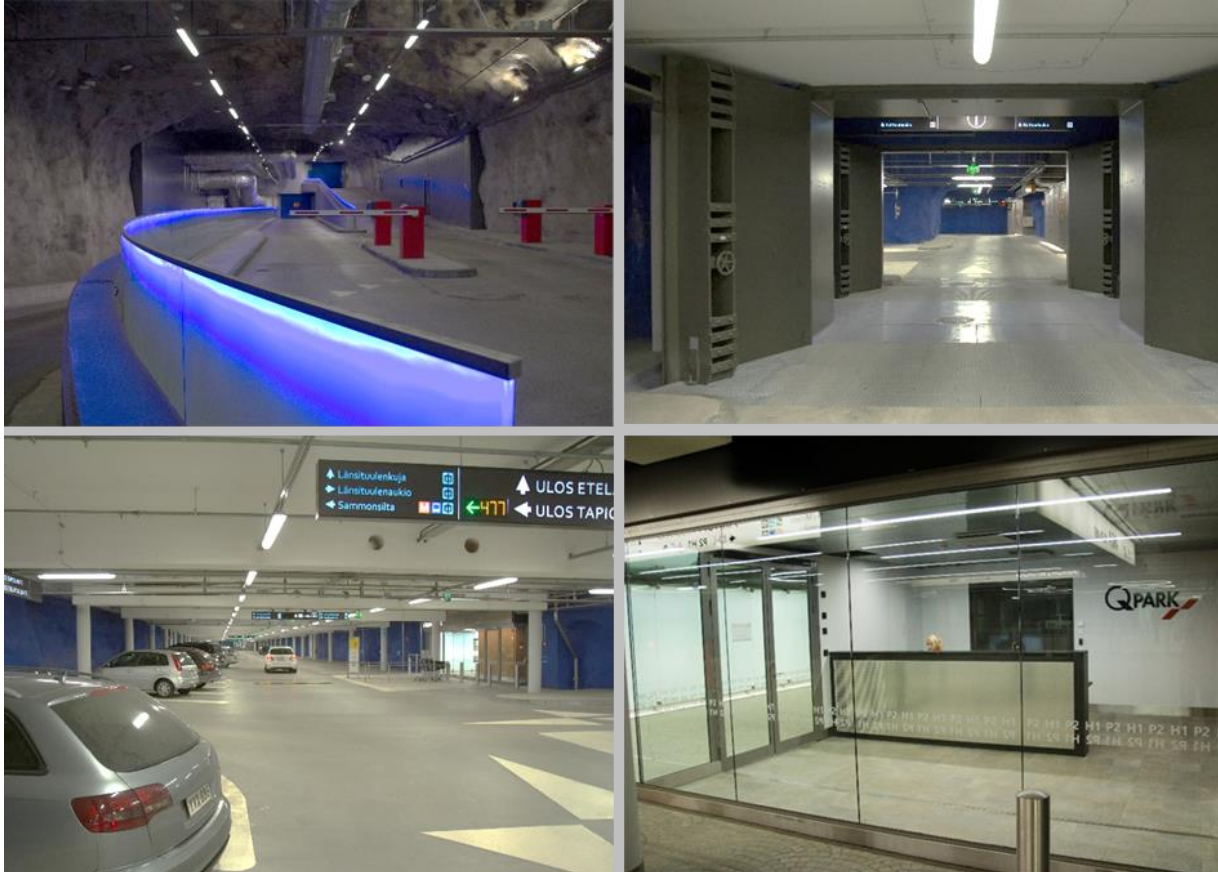
Special Features



- Elevator lobby walls are made of genuine teak and backlit glass
- 4 escalators with direct access to the shopping centre
- Elevators serve various functions of the entire city centre
- Pick-up point for shopping centre customers is operated by Q-Park
- 2 recycling points – one per main floor
- Six colour coded areas in the car park



- Park Assist M4 Smart-Sensors, identify and count cars per parking space
 - Help to find your car + a free space
 - Find Your Car option at payment machine
 - Tiered parking (revenue management)
- State of the art S&B payment machines
 - QR code campaigns with shops possible
 - ANPR & Park Assist integrated in pick-up point to offer a unique service
 - customers drive into to a vacant loading bay and open their boot for goods to be collected
- Loyalty card discounts e.g. to Stockmann
- P+R area offers commuters a different price
- Customers can pre-book a parking space



- Virve Public Safety network
- General audio system
- Fire alarm system
- Smoke exhaust system
- Emergency lighting system
- Fire doors and smoke barrier doors
- Smoke barrier curtains
- Closed circuit television (CCTV)
- To prevent 'anonymous' accidents, video of each space is recorded and kept for two weeks
- Air raid shelter for 4,040 people



Quality in parking