



Perrache Confluence Lyon - France

EPA Award 2011

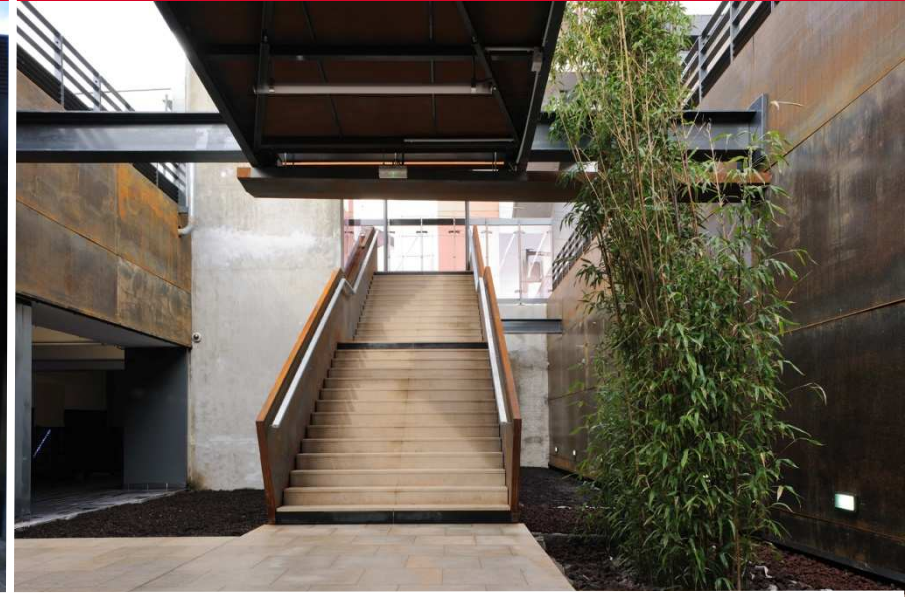
Category New projects

Perrache Confluence city environment

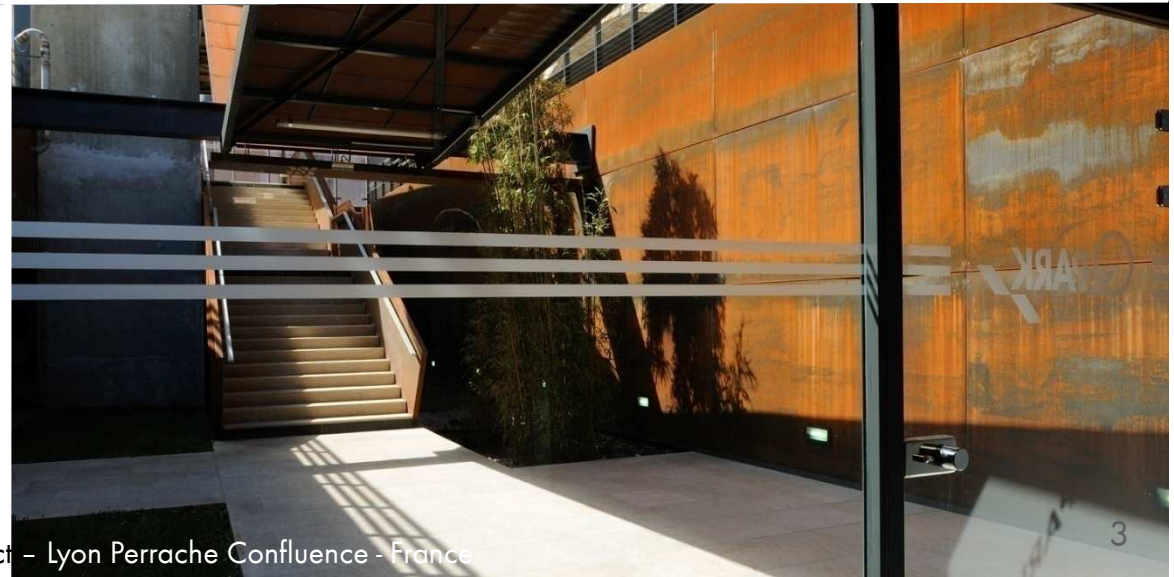
- Regional railway station
Lyon-Perrache
- Tramway and subway stations
- Parking spaces : 649



Perrache Confluence identification and access



- Natural approach with plants in the entrances
- Environmental friendly materials



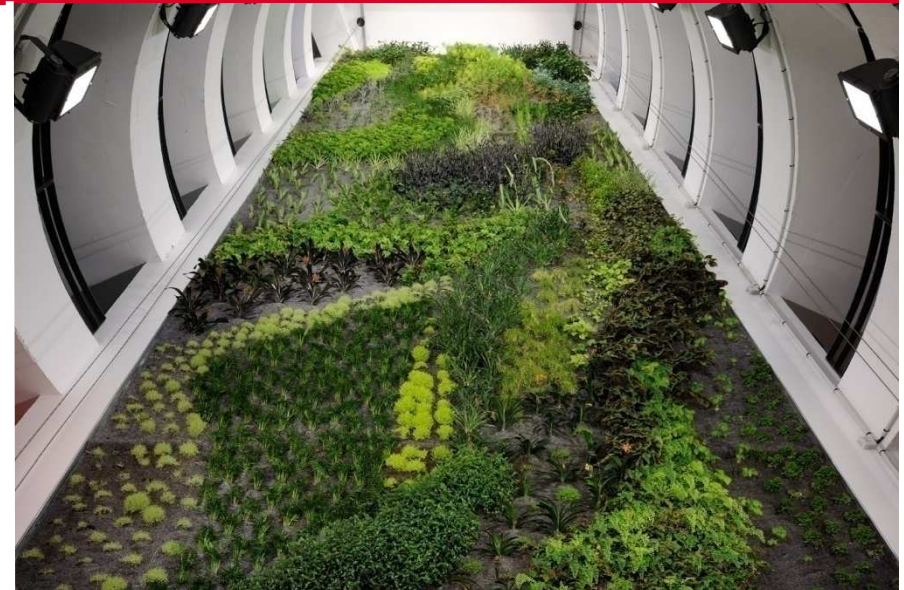
Perrache Confluence surrounding townscape



EPA Award 2011 - Category New Project - Lyon Perrache Confluence - France

Perrache Confluence structure 1

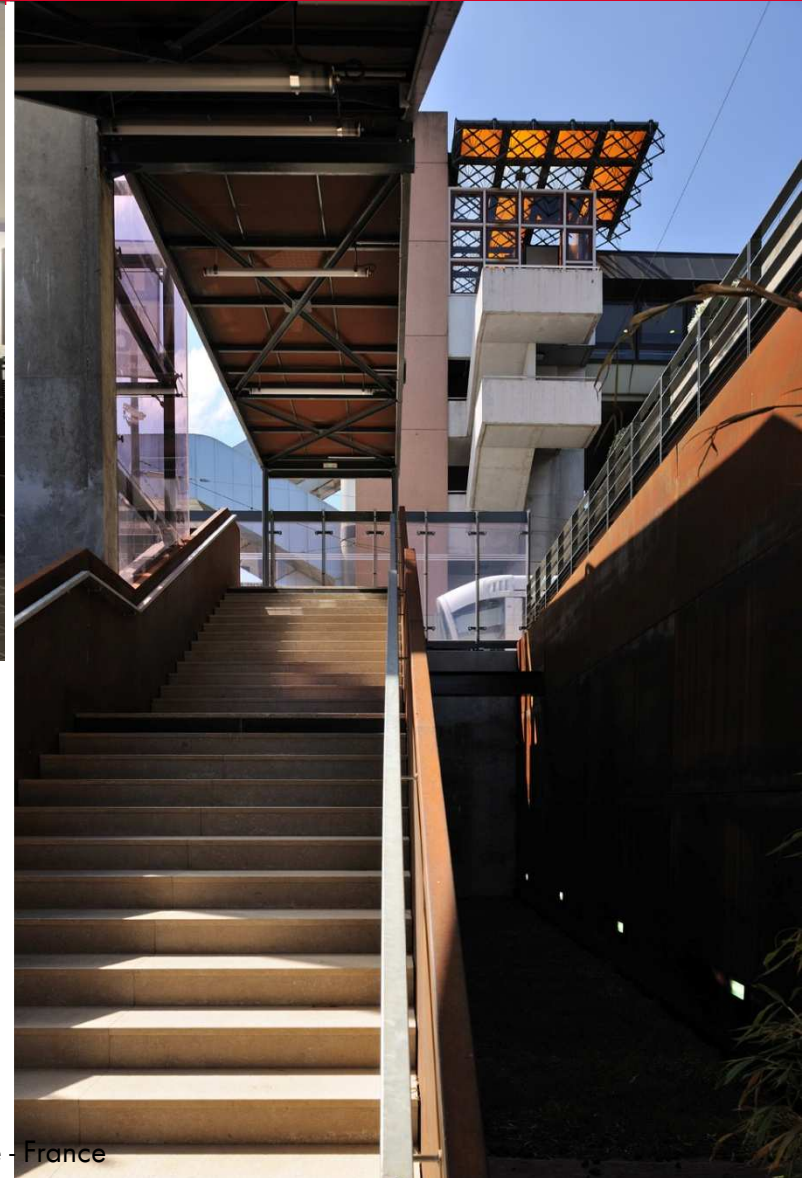
- Column-free car spaces
- Vegetalized wall running through all 8 floors



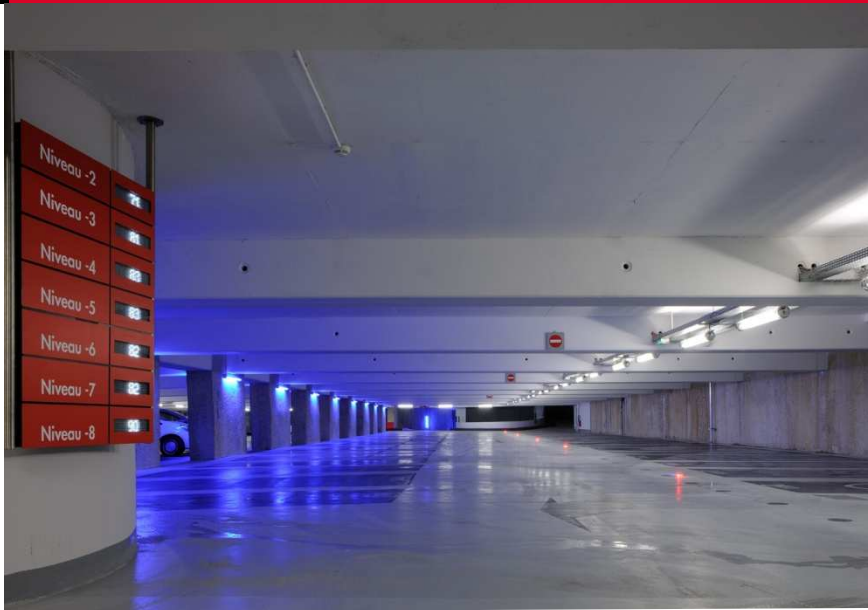
Perrache Confluence structure 2



- Large space for pedestrian access
- Transparency and natural light



Perrache Confluence layout, routing, orientation

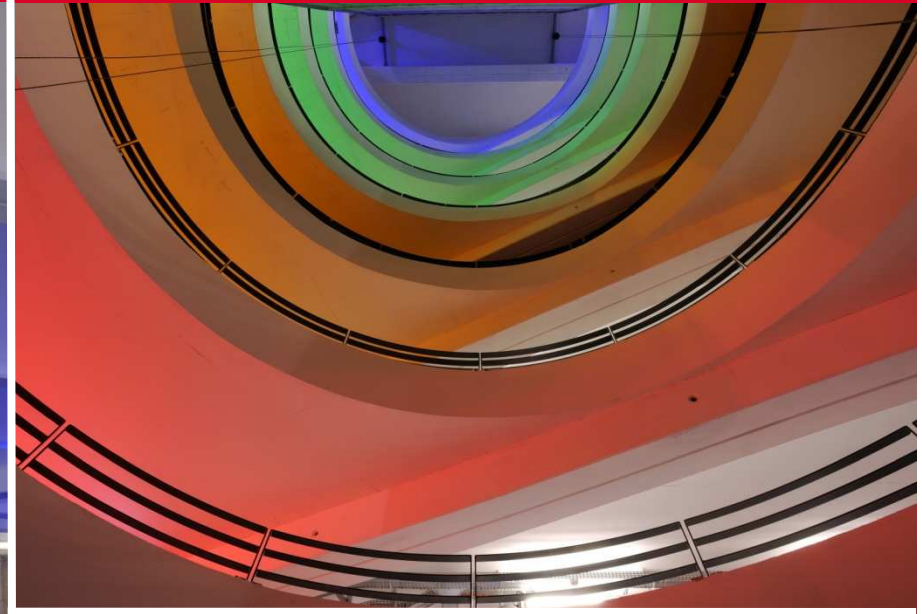


■ Free spaces per floor information

■ Dynamic info screen

■ Short time drop zone

Perrache Confluence safety, security, lighting



- Different lighting colours for each floor
- Pastilles for pedestrian walk way

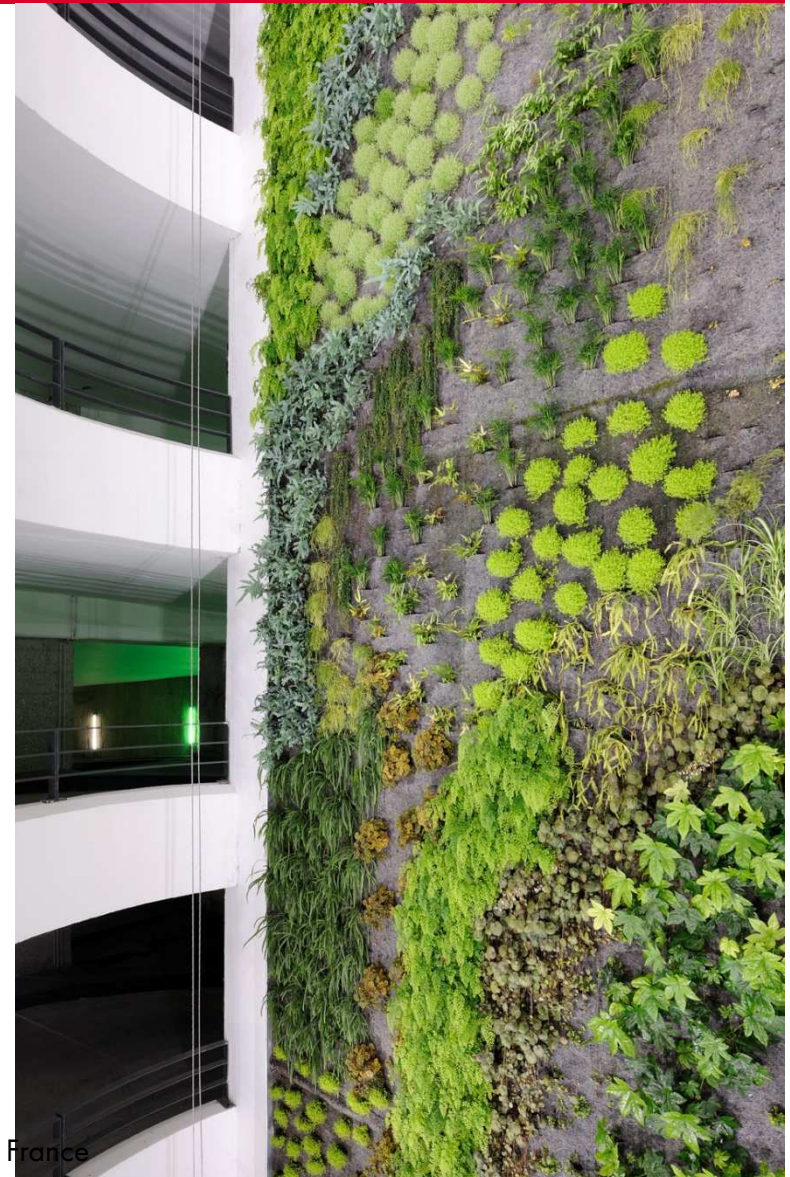
Perraches Confluence supervision, management

- Team present on site :
 - Monday to Friday : 8 AM – 9 PM
 - Week-ends : 10 AM – 5 PM
 - Other time frames : Distant Customer desk
- Customer services :
 - Umbrellas
 - Children buggy
 - Heart Defibrillator
 - Jump starter



Perrache Confluence special features

- First worldwide : 2 vegetal walls
 - 22 meters high
 - 27 different plants
 - Recycled water used
- Environmental issues
 - Energy saving light systems with presence detectors



Perrache Confluence usage information

- Type of users :
 - Business and residents
- Typical peak hours :
 - 7 to 10 AM
 - 5 to 7 PM
- Parking tariffs
 - 20 min : 0,65€ / 1 hour : 1,95€
 - Monthly season ticket 7x24 : 107,85€
- Promotion panels
 - Drop zone for very short time parkers (20 min)

