



Q-Park Nørreport Copenhagen, Denmark

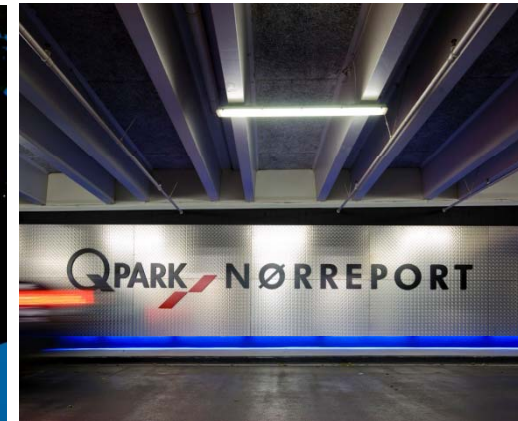
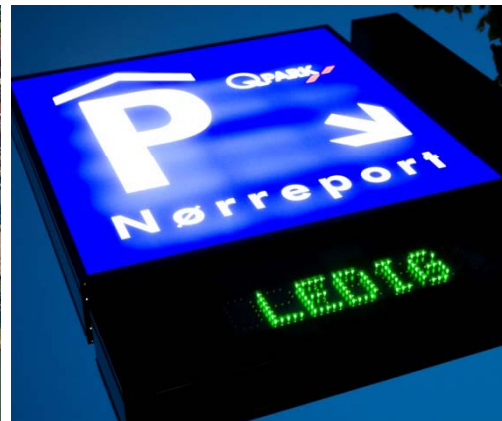
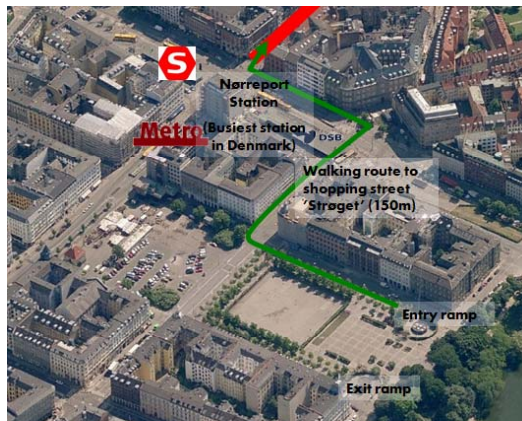
EPA Award 2011

Category Renovated projects



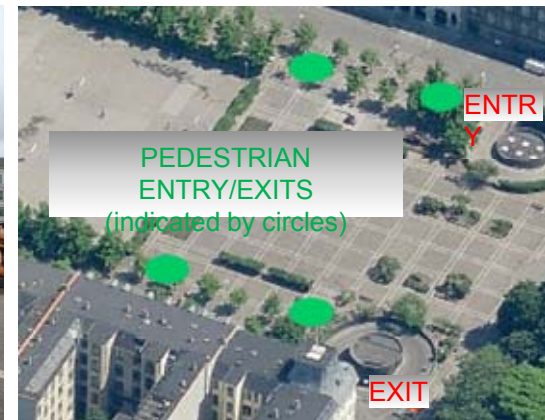
Q-Park Nørreport - city environment

- Located in central Copenhagen
 - Next to Nørreport Station (largest station in Copenhagen - subway, trains & busses)
 - Close to the famous pedestrian area “Strøget”.
- Parking capacity of 1150 cars
 - The largest parking facility in Copenhagen
- New identity completed with the new name Q-Park Nørreport
 - The location of Nørreport Station is more well known than that of Israels Plads, so the former name Q-Park Israels Plads was changed, making the carpark easier to locate.



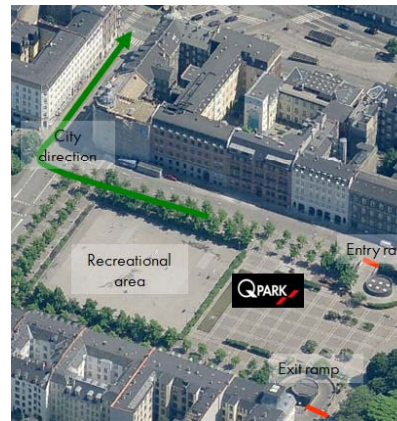
Q-Park Nørreport - access

- Access by car from Nørre Voldgade
 - Public parking guidance from Nørre Voldgade as well as other major streets in Copenhagen)
- Easy access for cars and pedestrians by
 - 1 entry ramp
 - 1 exit ramp
 - 4 pedestrian entry/exit points with lifts and staircases



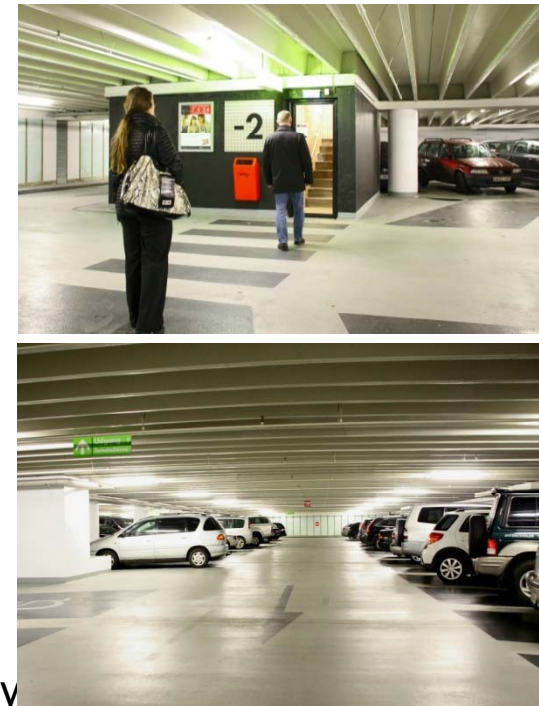
Q-Park Nørreport - surrounding townscape

- Pedestrian entry/exit points in glass + Entry portal in elegant minimalistic design
 - Matches the surrounding historical protected architecture
 - Matches the future developments in the area:
 - “Torvehallerne” a new marketplace, is currently being constructed
 - The park of H. C. Ørsted will be expanded to include the area above the carpark
- Improved safety in and around the carpark
 - Due to new access control the area no longer attracts drug addicts and homeless people and is therefore suited as a recreational area for children.



Q-Park Nørreport - structure

- Main features of renovation:
 - Constructive repair work
 - Entrance/Exit ramps
 - Paintwork
 - Improved illumination
 - Floor coating
 - Renovation of lifts & staircases
 - Upgrading and painting of parking equipment
 - Establishment of parking host lodge
 - Ventilation improvements
 - Establishment of toilets
 - Replacement of glass in staircases for extra day



Q-Park Nørreport - structure

- BEFORE: Entrance/exit area, pedestrian entry/exit point and parking floor

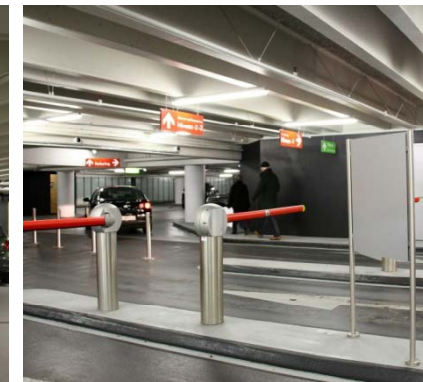
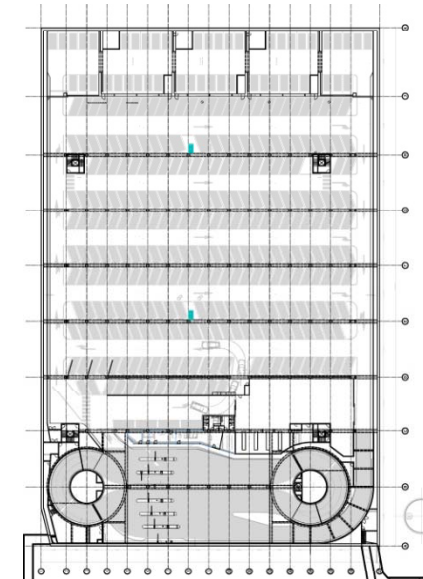


- NOW: Entrance/exit area



Q-Park Nørreport - layout, routing, orientation

- Design of the parking area:
 - BEFORE: Open area, no parking spaces
 - NOW: Wide angled parking spaces for easy parking
- Signage and routing information:
 - BEFORE: No signage within the carpark
 - NOW: Clear signage og routing information for cars as well as pedestrians



Q-Park Nørreport - safety, security, lighting



- Increased and improved illumination in all areas
- Improved ventilation
- Increased safety due to access control and speedgates
- Staff present during daytime
- Video surveillance and Call Center assistance 24/7
- AED available

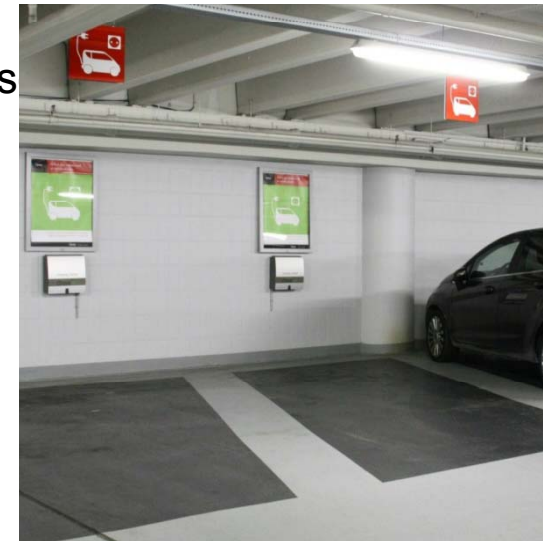
Q-Park Nørreport - supervision, management



- Parking host lodge with meeting facilities and ventilation
- Promotion panels
- Extra services:
 - Jumpstarter
 - Alcoholtester
 - Easy Carwash (external partner)
 - Free charge stations for electrical cars
 - AED

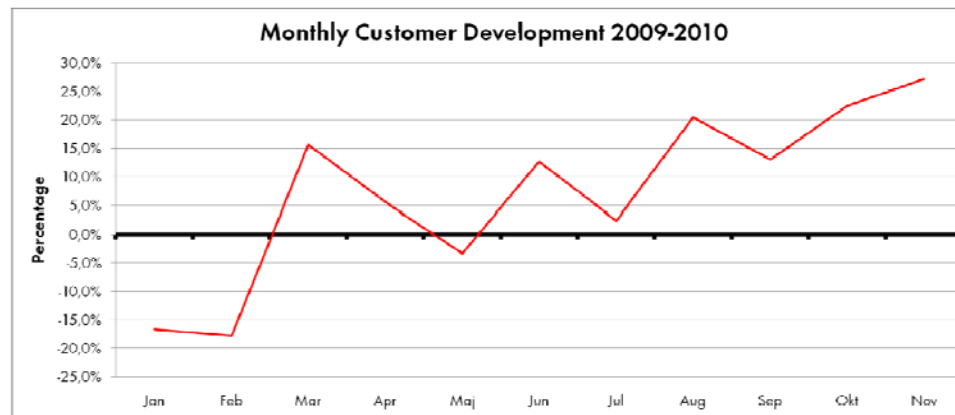
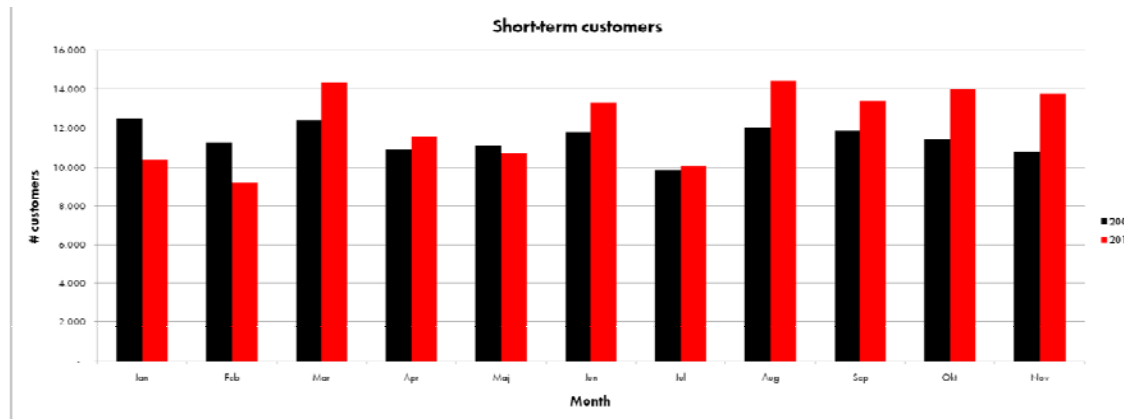
Q-Park Nørreport - special features

- Focus on environmental issues
 - Energy saving light systems due to motion sensors
 - Free charge stations for electrical cars
- Focus on the quality parking experience
 - Clean & safe parking
 - Easy access
 - Convenient and easy payment
 - Selection of subscriptions (7x24, office etc.)
 - Selection of extra services
- Focus on partnerships with local attractions and venues
 - Folketeatret (Theatre)
 - Hotel Sct. Petri
 - Hotel Fox



Q-Park Nørreport - usage information

■ The growth in number of short term customers



- The renovation was completed in June 2010
- The growth from January-May 2010 compared to 2009 was -3,3%
- The growth from June-November 2010 compared to 2009 was +16,6%

