

Interparking Padova Centro Padova, Italy

EPA Award 2013 – New project

Padova Centro car parking location (1/2)

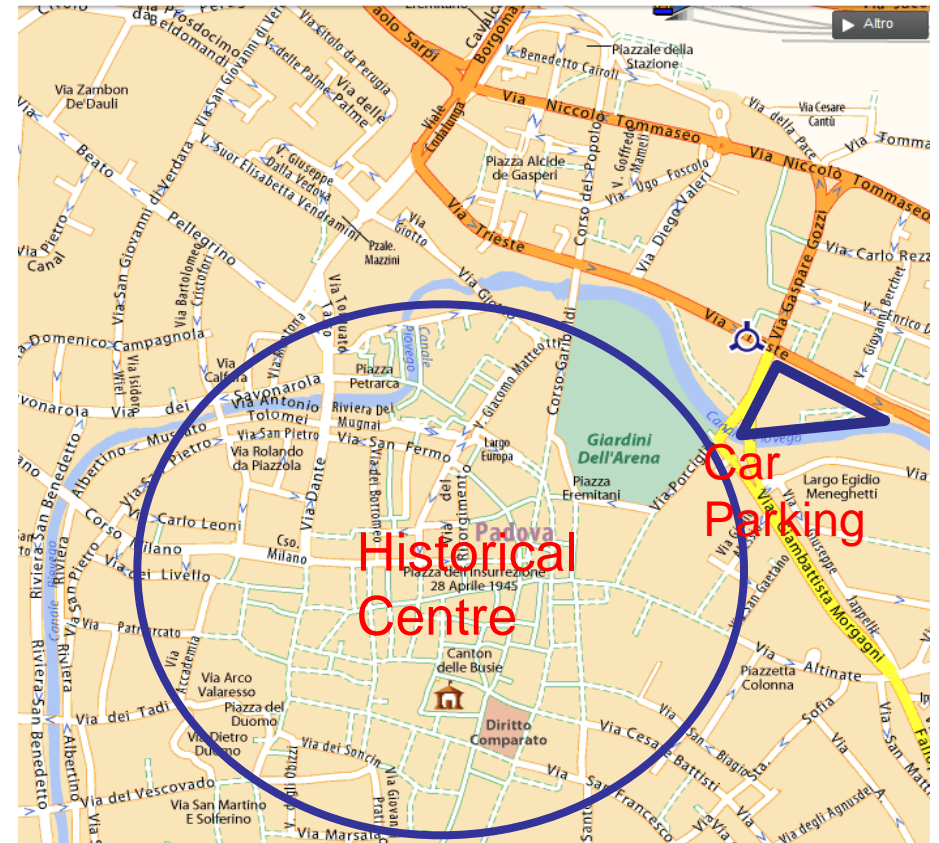
Padua is a city and comune in the Veneto, northern Italy. It is the capital of the province of Padua and the economic and communications hub of the area. The city is sometimes included, with Venice, in the Padua-Venice Metropolitan Area, having a population of c. 1,600,000.

Padua stands on the Bacchiglione River, 40 km west of Venice and 29 km southeast of Vicenza. The Brenta River, which once ran through the city, still touches the northern districts. To the city's south west lies the Euganean Hills, praised by Lucan and Martial, Petrarch, Ugo Foscolo, and Shelley.

It hosts the renowned University of Padua, almost 800 years old and famous, among other things, for having had Galileo Galilei among its lecturers.

The city is picturesque, with a dense network of arcaded streets opening into large communal piazze, and many bridges crossing the various branches of the Bacchiglione, which once surrounded the ancient walls like a moat.

The car parking will be the most central one in Padova serving the historical center, the area with relevant high quality shopping, and touristic points of interests including the relevant Scrovegni Chapel with paintings from Giotto. Opposite from the pedestrian centre, the large banking district and the main University area are also bordering the car parking.



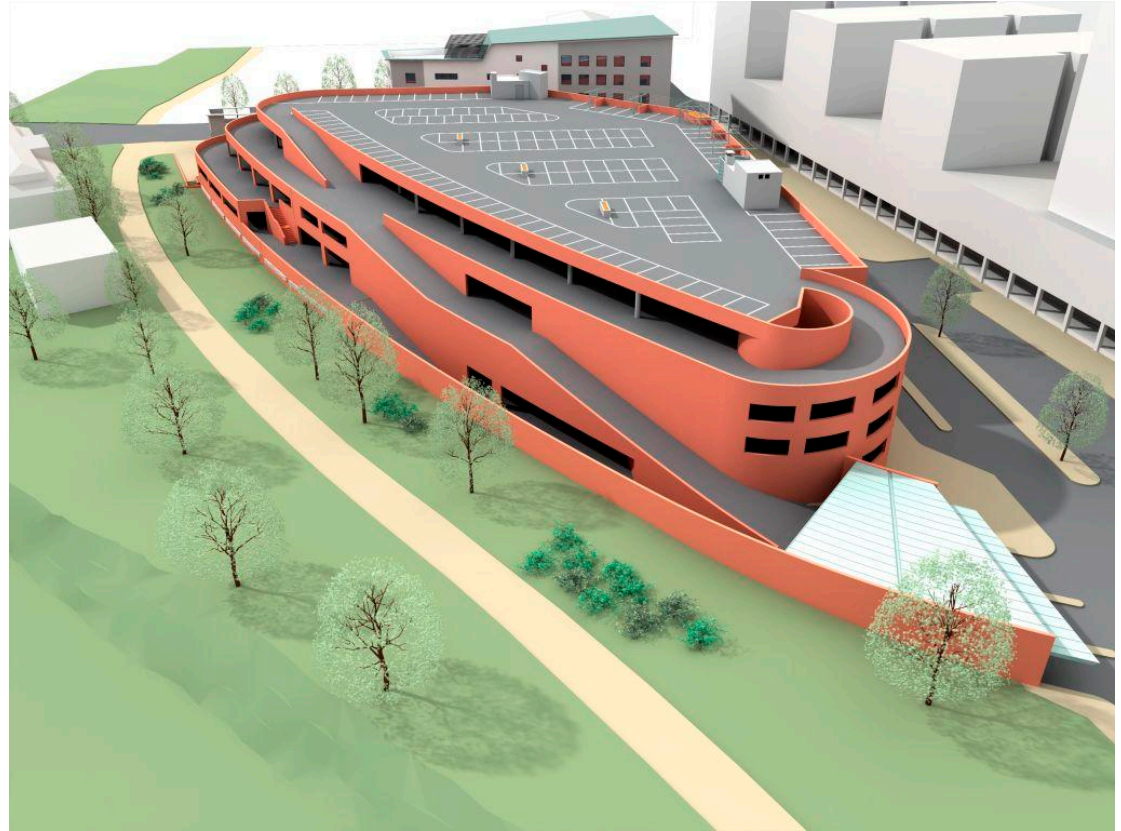
Padova Centro car parking location (2/2)



- Car parking
- Banking district
- Coming City Auditorium
- Scrovegni Chapel
- Main University area
- Roman arena gardens
- Musei degli Eremitani
- Shopping area
- Caffè Pedrocchi
- Old University
- Palazzo della ragione
- Piazze

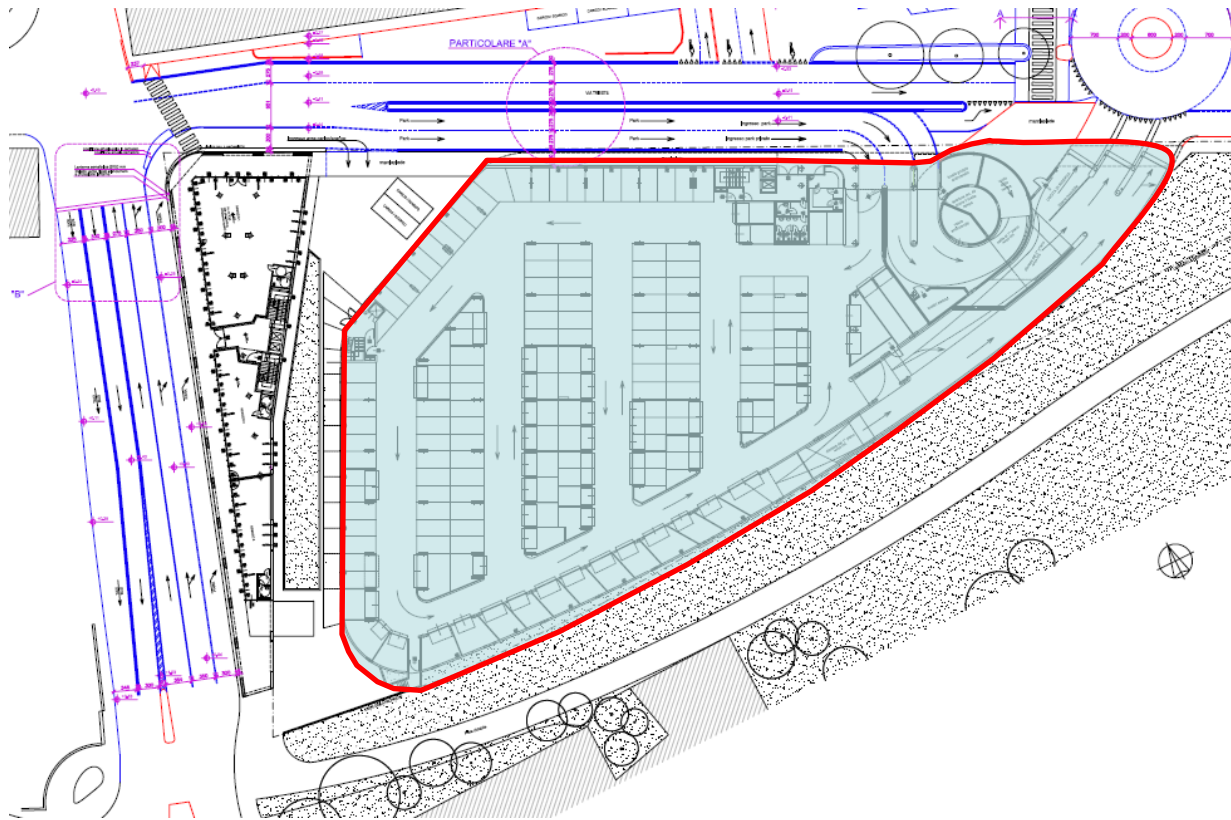
Padova Centro car parking facts and figures (1/2)

- Off street elevated car parking
- 5 floors (ground floor + 4 levels)
- 150 + 100 boxes owned by private
- 528 public car places for rotation
- Construction costs 9 M€
(excluding the area cleaning up)
- Construction time 18 months
(excluding the area cleaning up)
- Located in an area with landscape constraints bordering the Piovego River and the magnificent buildings close by
- Designed making usage of curved lines with terraces and smooth colours



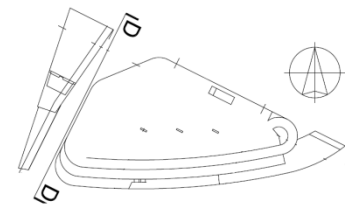
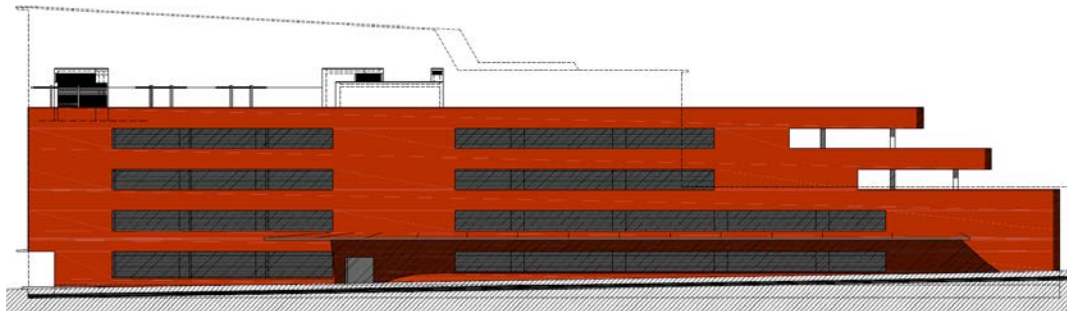
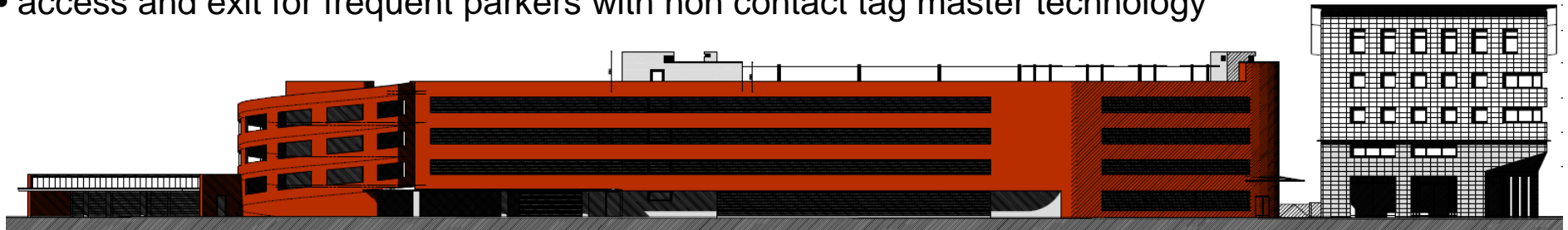
Padova Centro car parking description (1/2)

- Designed with a guidance system outside and inside the car parking with both static and variable signs;
- Designed to avoid car crossing: all main aisles and ramps are one-way;
- Designed to be easy to use for pedestrian with access with a valid parking ticket only;
- Designed with a separate external car circulation flow;
- A new pedestrian way has been designed between the car parking and the river connecting the City centre with the main University area.



Padova Centro car parking description (2/2)

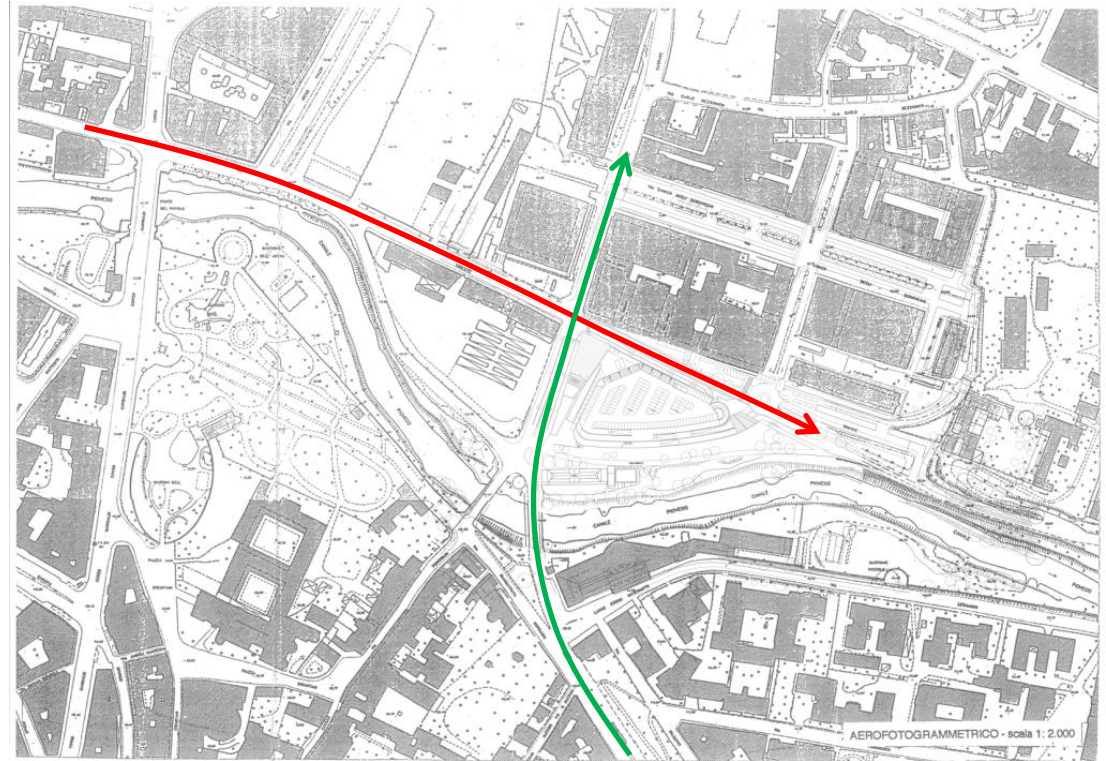
- open 24h / 24h
- separate entrances for owners and rotation customers
- local control room always with parking service staff available in the car parking
- well marked emergency exits, fire extinguishers and hydrants
- in front of the coming soon new City Auditorium
- all means of payment accepted
- access and exit for frequent parkers with non contact tag master technology



Padova Centro car parking environment and mobility

The car parking has been developed:

- in the crossing of the main traffic streams in the north-east part of Padua: the west-east in red and the south – north in green;
- considering also a complete cleaning up of a site originally used, several decades ago, by a chemical plant;
- to be fully integrated in the green area bordering the Piovego river in the center of the city
- to use only natural ventilation with a relevant energy saving;
- with a stand alone water treatment and using traded renewable energy



Padova Centro car parking pictures



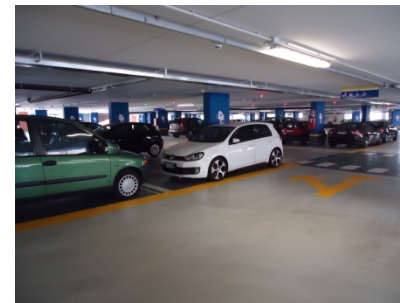
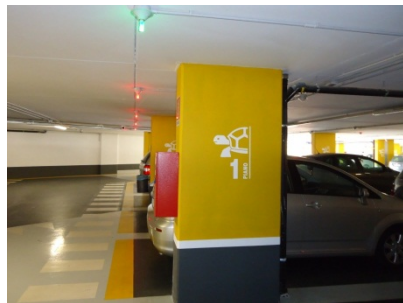
Padova Centro car parking pictures

High ceilings, soft grey floors and white walls give a sense of cleanliness, airy space, light and elegance.

Surfacing is waterproof with usage of colored resins.

Special places for bikes, family cars, electrical cars and small cars are also foreseen.

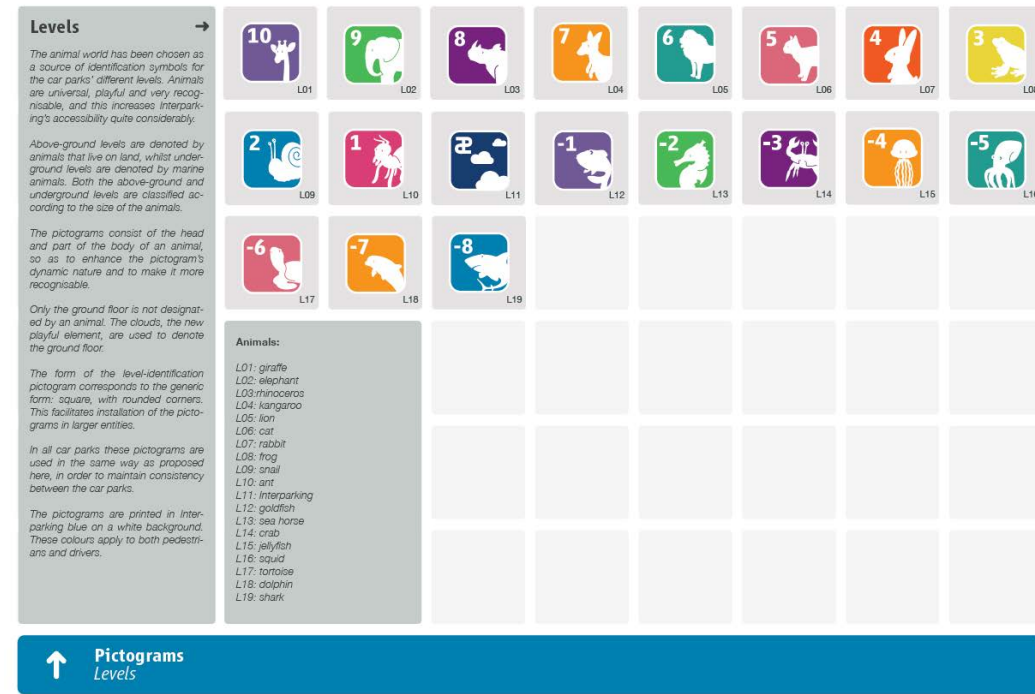
Each rotation car parking floor is marked with a different color and an animal pictogram.



Padova Centro car parking equipments

The car parking makes full usage of the Interparking Group new house style and is equipped with a:

- Skidata 460 automation system with 3 automatic cash machines and a manual one and barriers on the 3 entrances and 3 exits
- 85 cameras of the CCTV
- several anti-panic buttons
- external guidance by means of 15 panels
- automatic internal signage
- single car place availability shown by means of red / green leds
- fire detection and extinguishing plants
- 2 stairs and 3 elevators
- toilets available for car parking users
- first aid and AED
- battery charger
- umbrella loan
- drinks and snacks vending machines
- manned office as information point



Interparking Group

26