

Refurbishment of the parking garage **KaDeWe P1** by VINCI Park Deutschland GmbH



REFURBISHMENT - KaDeWe P1- 2008

Introduction

The parking garage was built in 1968 and has been refurbished in the months between April 2007 and May 2008.

In August 2006, VINCI Park signed a long-term lease contract with the Arcandor Group concerning the majority of the KARSTADT-ERTHEIM car parks.

The lease contract provided the modernization of 55 run-down car parks within 18 months.

Following measures were realized within the specified time in all car parks:

New signage, modernization and rebuilding of a car park office, modernization and renewal of the parking pay station, modernization and renewal of the lighting system, separation works at approximately 30 car parks for a 24 hour service.

The car park KaDeWe P1 is an exemplary car park for especially visible changes.

The parking garage has seven levels with parking spaces for 678 cars. In 2008, the parking garage accommodated 725,000 short-term parkers.

The total cost of investment for the renovation and modernization amounted to 1 million Euros.



Canopy



before



after

The entrance has been expanded with the addition of an extra driving lane.
A new canopy over the entrance was also added.

Additional entrance



n additional entrance minimizes waiting times.

REFURBISHMENT 2008 KaDeWe P1

Lighting System & Stairwells

before



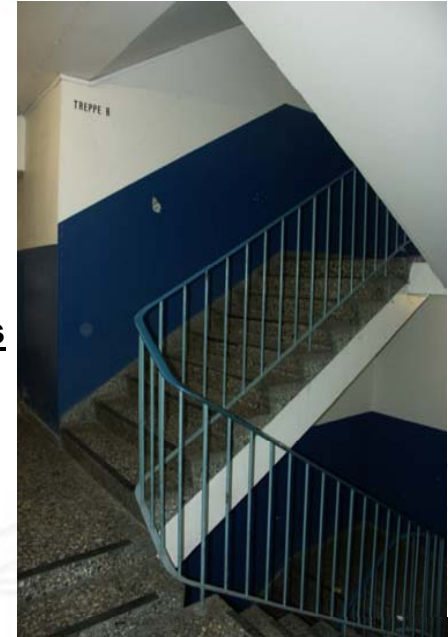
A complete new lighting system was installed on all parking levels and stairwells.

For the reconstruction of the complete parking garage high quality paint and varnish were used.

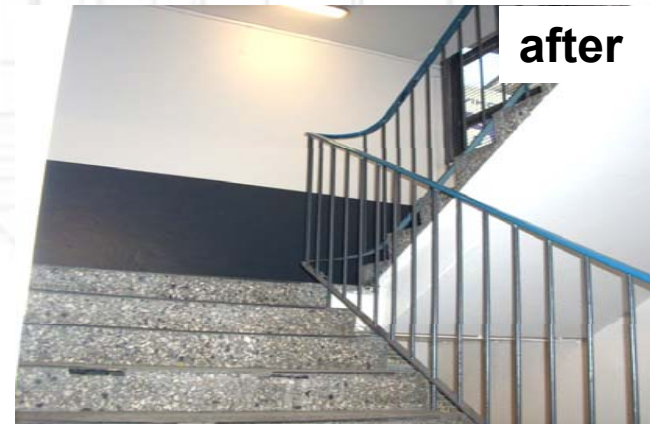
after



before

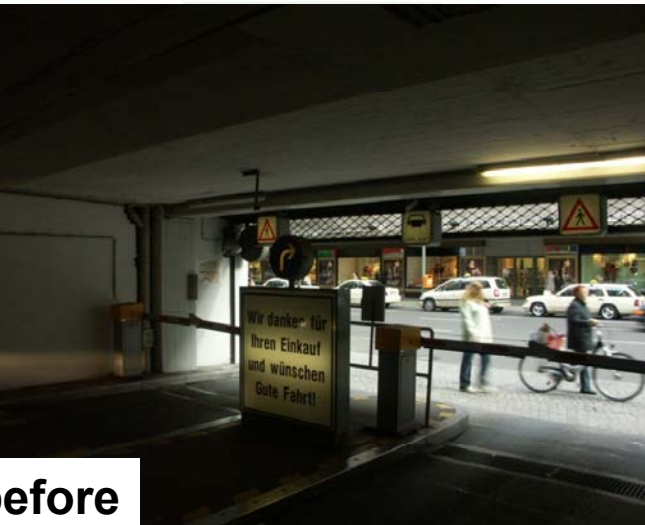


after



REFURBISHMENT 2008 KaDeWe P1

Signage & Widening of the exits



before

Unnecessary and confusing signs were removed and replaced with clearer signs of higher quality.



after



before

The exits were widened by approximately 30 cm (1 foot) each.

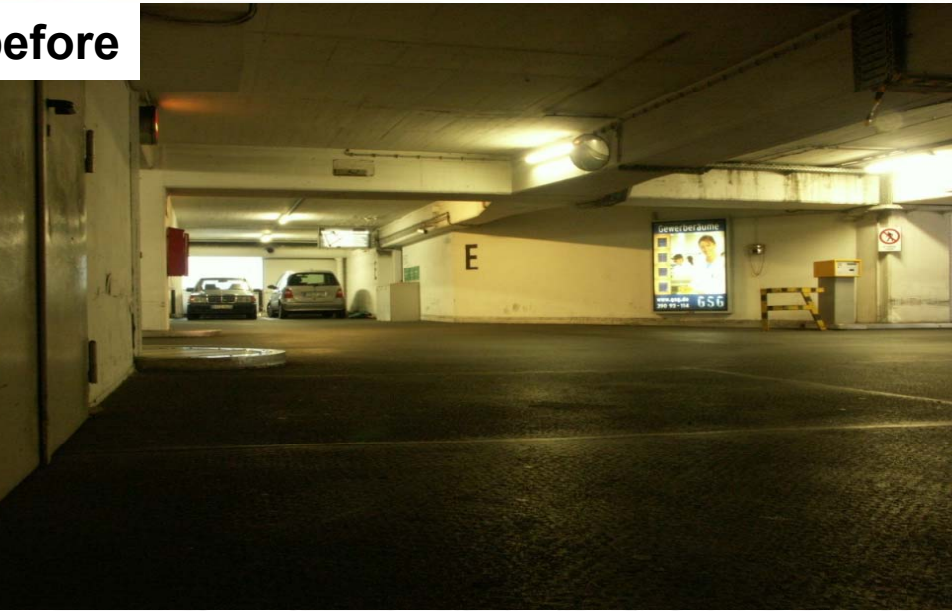


after

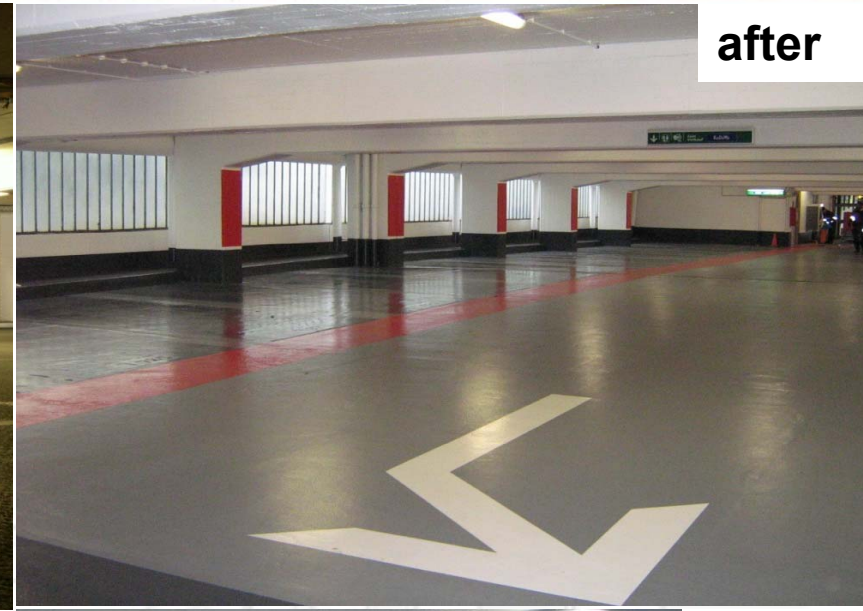
30 cm

Parking Level Coating & Optimization of Orientation

before



after



For easier orientation, each parking level now has a unique colour. The new floor coating gives a shiny appearance.

after



Replacement of pay stations

before



after



The Designa PM 100 M pay station has been replaced by a modern Siemens / Designa Abacus. There are now a total of 7 pay stations in the parking garage. The new pay stations have large screens and allow cashless payments via credit cards and cooperation cards, for example the TOTAL-Fuel Card.

REFURBISHMENT 2008 KaDeWe P1

Parking Garage Security



The new video surveillance provides increased security throughout the parking garage and also gives the parking garage attendant the possibility to assist customer at the pay machine etc.

REFURBISHMENT 2008 KaDeWe P1

Parking Garage Office & Services



The parking garage office is 55 m² and houses WC and kitchen within. The customer service area offers friendly staff service for free: rental of bicycles, bags and umbrellas, breakdown assistance, etc..