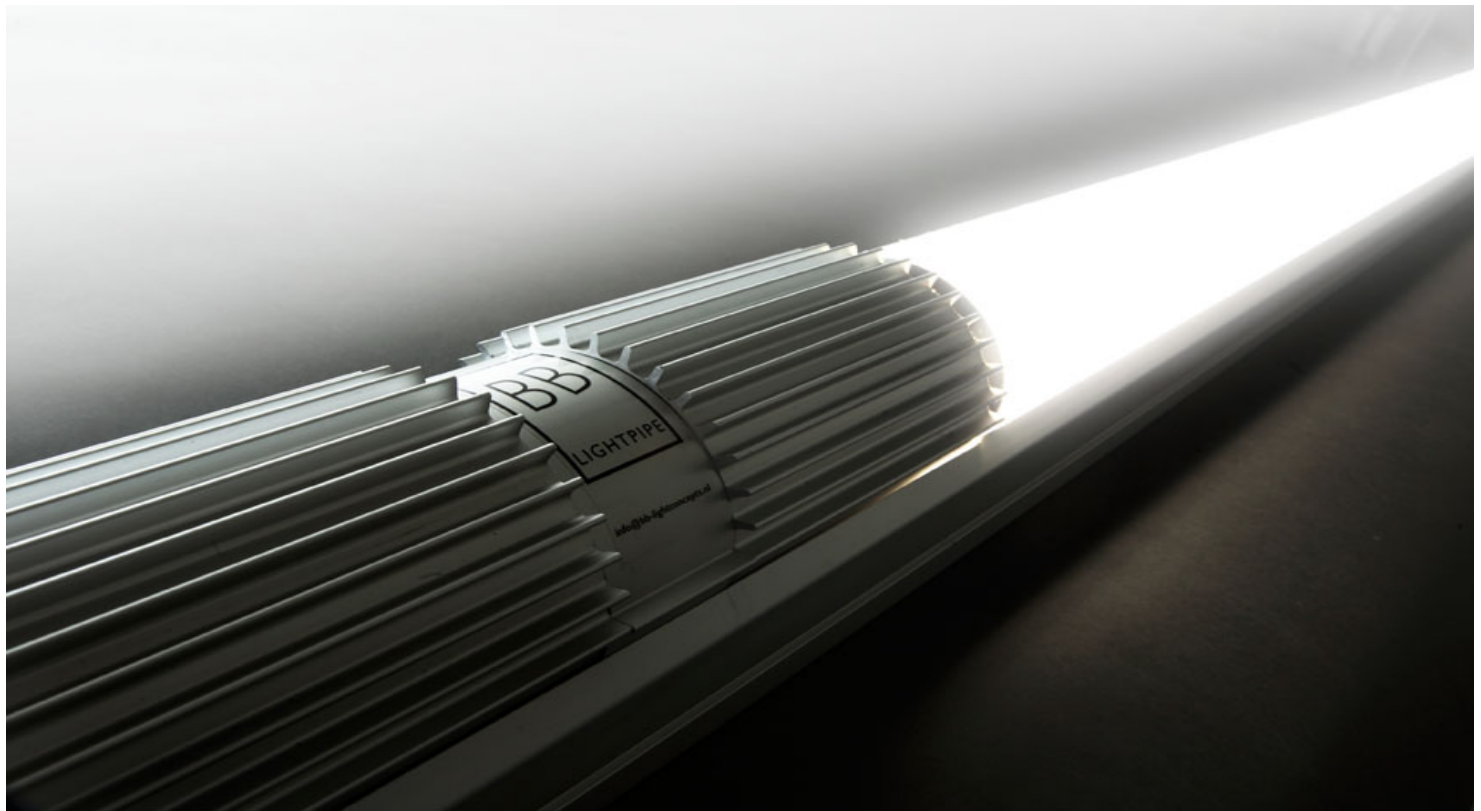


BB

LIGHTCONCEPTS®

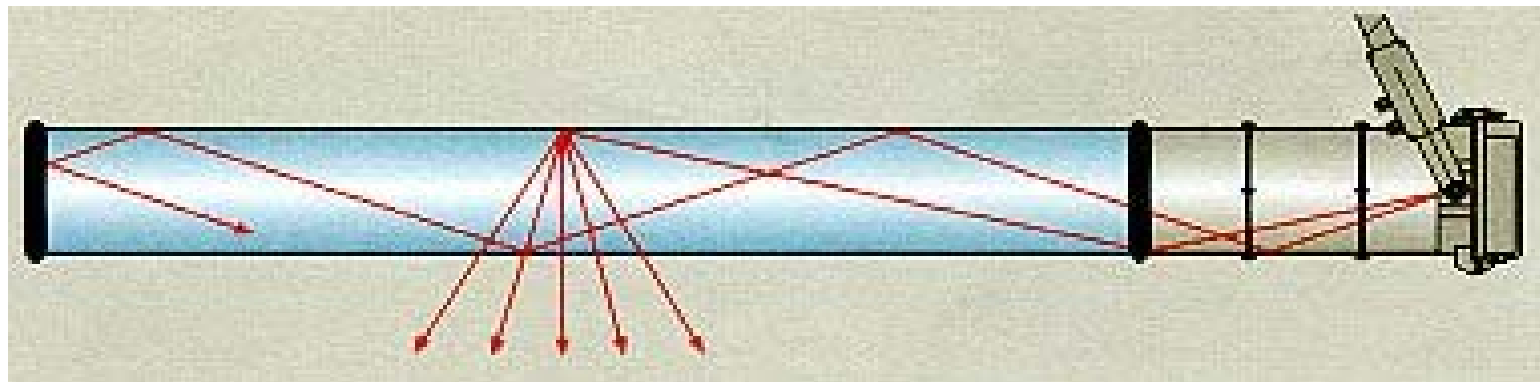
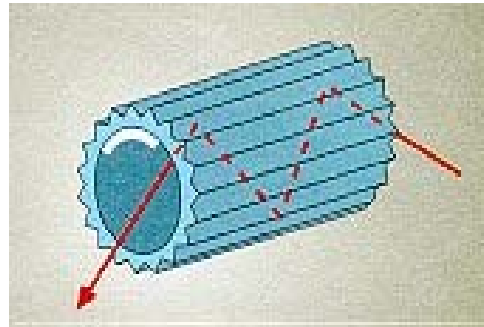


# BB-Lightpipe® module example





# Principle BB-Lightpipe®





# BB-Lightpipe® VS HF-Fluorescent Lamp

## BB-Lightpipe®

- Pre wired with connectors for fast installation
- Standard 50% dimmable
- Vandal proof
- Very high RA-value (96)
- No blinding
- Same light output at low temperature

## HF Fluorescent Lamp

- Needs cable cutter
- Non dimmable
- Not vandal proof
- Lower RA-value (80)
- Blinding
- Reduced light output at low temperature



# BB-Lightpipes® unique features

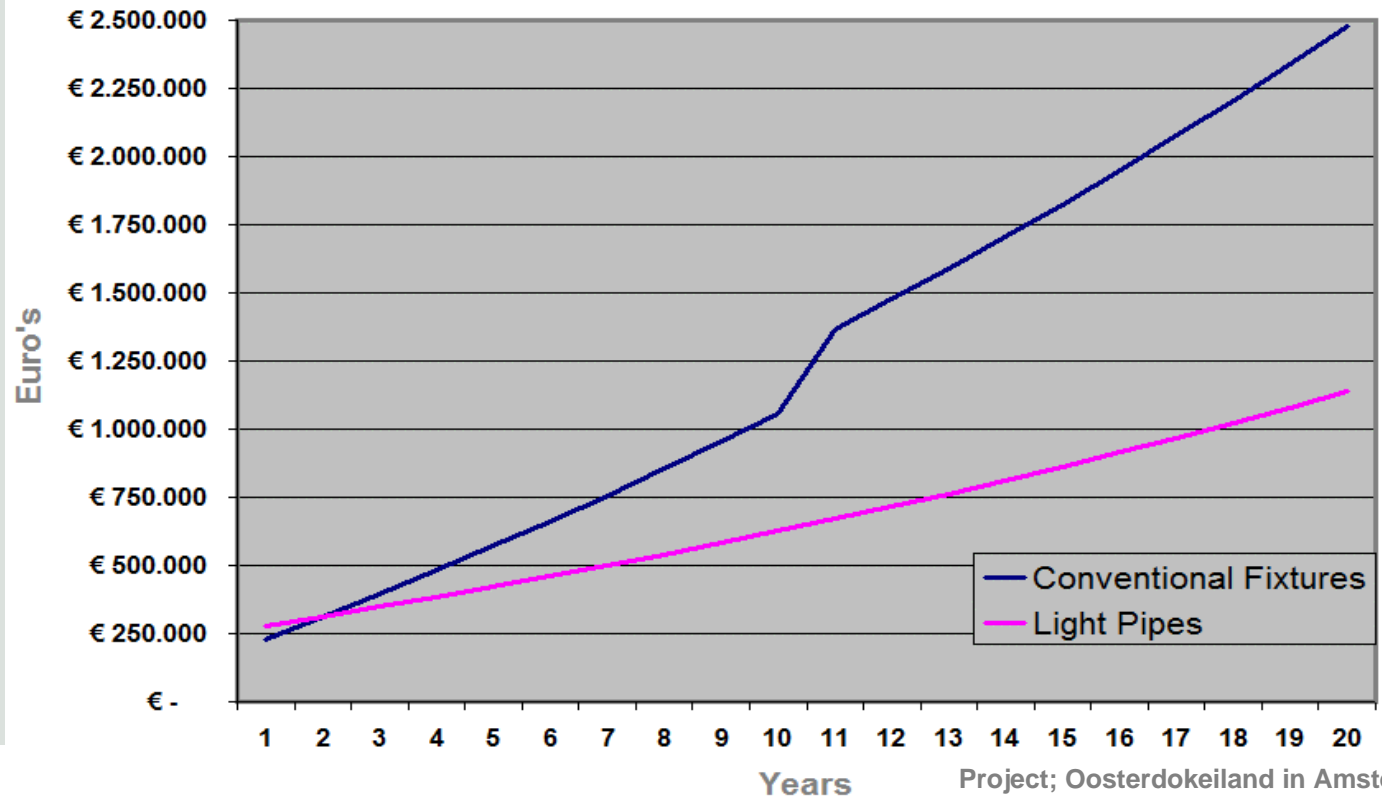
The BB-Lightpipes® were chosen for this project because it is like no other light concept. It's distinctive in many features.

- Safety and security
- Easy and fast to install
- Low maintenance
- Energy efficient
- Modular system
- Light management system
- Interval lighting
- Durable
- Light data
- DALI (Digital Addressable Lighting Interface)



# ROI Return On Investment BB-Lightpipe®

### Cumulative exploitation cost comparison





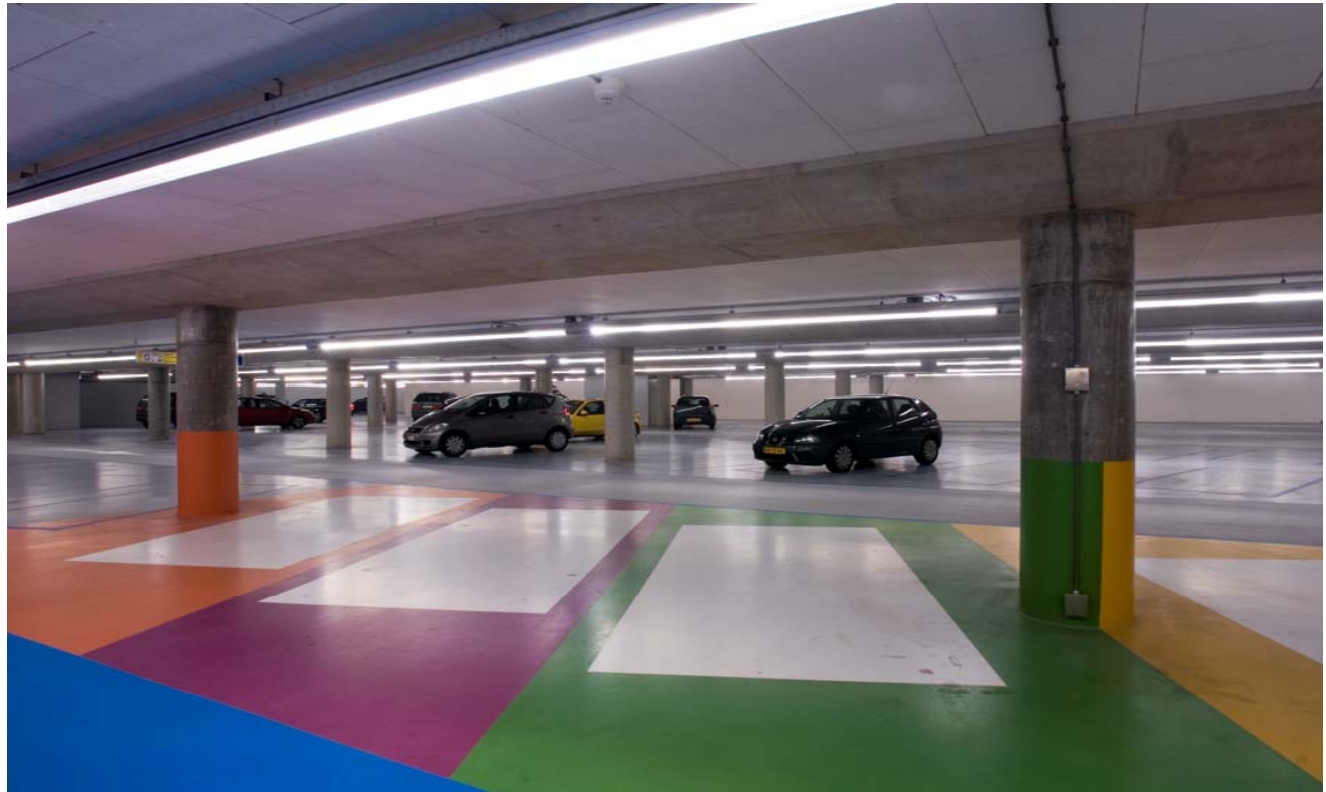
# Project Oosterdokeilanden Amsterdam



Project; Oosterdokeiland in Amsterdam



# Project Oosterdoeklanden Amsterdam



Project; Oosterdoekland in Amsterdam



# Project Oosterdokeilanden Amsterdam



Project; Oosterdokeiland in Amsterdam



# BB-Lightconcepts Mission statement



“Using **energy conscious** light sources and durable materials in an **innovative** manner, for efficient light solutions which **illuminate** our society”.